



Product Specification

BX-L1A video controller

VERSION: V1.0 RELEASE DATE: 2021.9.13

Overview

Simple construction; Convenient instruction; No need protocol; Used for bus vehicle-mounted intelligent gateway project. And it adopts HD image processing techniques which is designed for small space LED display. So, for HD resolution LED screen, you can input and output pixel to pixel. You will get a HD window by this technique.

BX-L1A includes one HDMI and one VGA input, 2 gigabit output port, one brightness sensor and one RS485 port. And according to customers' requirement, it can be RS232. On-board two gigabit port outputs, it's the integrated one of video processor and sending card.

Characteristics

- ◆ Support 1,310,000 pixels, horizontal maximum 3840 pixels, vertical maximum 2500 pixels.
- ◆ 2 gigabit outputs
- ◆ Support one HDMI1.4 input and one VGA output port;
- ◆ Support customized input resolution settings of digital input port HDMI;
- ◆ Support input and output pixel by pixel;
- ◆ Support HDMI audio earphone output port and audio power amplifier output port;
- ◆ Support RS485 port, can connect temperature & humidity sensor;
- ◆ Support one brightness sensor
- ◆ Support controlling and debugging this equipment by PC USB port

Specifications

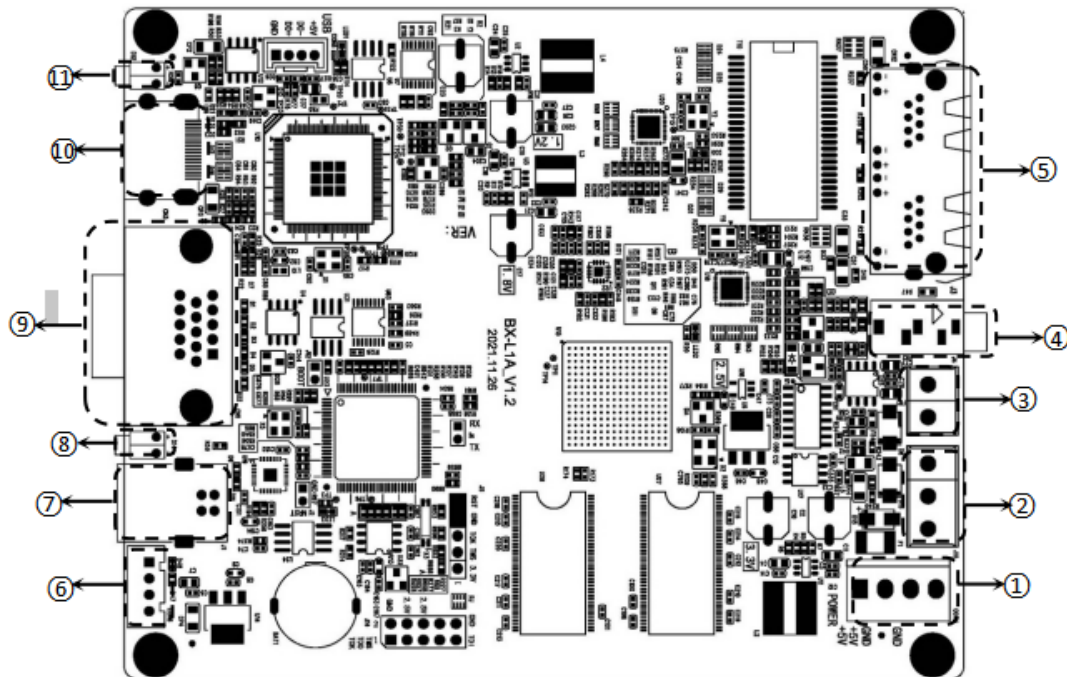
Video input	
HDMI×1	VESA standard: 1920x1080@60Hz downward compatibility, HDMI 1.4
VGA×1	VESA standard: UXGA@60Hz downward compatibility

Video output port	
NET×2	2 gigabit outputs, connect LED screen by LAN cable, and connect receiving cards directly; Maximum support 1,310,000 pixels, width≤3840, height≤2500;

Other ports	
LIGHT	brightness sensor port
RS485/ RS232	RS485 port (RS232 is optional)

Details	
input power	5V (3.3V ~ 6V wide working voltage)
maximum power	≤10W
working temperature	-40°C~80°C
environmental humidity	10%~90%
controlling	LedshowTV, OVP Builder
weight	About 100g

Interface



Interface specification		
1	power port	5V power port, DC power input, rated 5V, support 3.5-5.5V
2	RS485	default is RS485, can be customized as RS232
3	udio earphone output	Connect outside audio amplifier
4	Audio power amplifier output	Connect 40hm 3watt or 20hm 5watt trumpet
5	Lan port	gigabit, connect receiving cards directly
6	LIGHT	brightness sensor port
7	USB	USB port, used for debugging
8	indicator light 2	When choose HDMI input, "indicator light 1" will off
9	VGA	VGA port
10	HDMI interface	HDMI outside input
11	indicator light 1	When choose HDMI input, "indicator light 1" will on

Contact Us

Shanghai ONBON Technology Co.,Ltd (Headquarters)

Address: 7 Floor, Tower 88, 1199#, North Qinzhou Road, Xuhui District, Shanghai City, China

ONBON (Jiangsu) Optoelectronic Industrial Co.,LTD

Address: 1299#, Fuchun Jiang Road, Kunshan City, Jiangsu Province, China
Tel: 086-0512-36912687
Website: www.onbonbx.com

Sales Contacts

Tel: 0086-15921814956 0086-15800379719
Email: onbon@onbonbx.com

Second Development

Tel: 0512-66589212
Email: dev@onbonbx.com

iLEDCloud

Website: <http://www.iledcloud.com/>



Public Wechat



ONBON APP