



BX-V75 Version C Specifications

Version : V1.3 Release data : 20.3.12

Statement

Any companies or privates cannot copy, transcribe or translate part or whole content of this file without our written permission. And cannot use it on any business or benefit filed with any forms. The specifications and information which are mentioned on the file is for reference only, if there's update, we will not inform you. This file is only for guidance, and all information will not be for any promises.

CATALOG

Brief Introduction.....	4
About Software.....	4
Characteristics.....	4
Guiding.....	5
Safety Note.....	5
Function Introduction.....	6
Simple install.....	6
Interface.....	6
Support special-shaped screens.....	6
Many scan modes.....	7
Compatible with many chips.....	7
Better effects.....	7
Clock adjustment.....	7
Blanking adjustment.....	7
Maintenance.....	7
Recommend loading.....	8
User Guiding.....	9
Choose Parameters.....	9

Brief Introduction

Thanks for choosing LED control card. The design of the control card is according to the international and industrial standard, but if the operations are incorrect, it will probably bring you personal injury and financial harm. As to avoid these and win more from your equipment, please obey the specifications of this file.

About Software

Cannot do any modification, decompilation, disassembling, decoding or reverse engineering on our software, it' s illegal.

Characteristics

- ◆ Simple construct; Convenient to install;
- ◆ Gigabit receiving card mode, be compatible with synchronous sending card and asynchronous YQ player;
- ◆ High refreshment; Abundant display effect; Support high refreshment and high gray scale;
- ◆ Simple operations;
- ◆ Support the normal chip, PWM chip, etc.
- ◆ Support any scan mode in 64 scan, and support 595 serial decoding scan;
- ◆ 24 nos RGB display, 12 nos hub75 interfaces integrated;
- ◆ Support “configure file” read back;

- ◆ Support detect on Ethernet communication;

Guiding

Safety Note

- Input voltage is 5V, voltage range is from 3V-6V, please make sure
- the quality of the power supply of BX-V75 series.
- Please make sure that all the power supply cables are plugged off when you want to connect or plug off any signal or controlling cables.
- Please make sure that all the power supply cables and signal cables
- are plugged off when you need to put in or take off the hardware equipment.
- Please take off the power supply of LED video processor before you
- do any hardware operations, and ESD by touching the ground.
- Please make sure the environment is clean, dry and ventilated when
- you use this product, also, do not put this product to a high temperature
- and wet environment.
- This product is electronic products, please keep away from fire, water source and flammable&combustible products.
- There's high pressure components in this products, please do not open the box and repair it by yourself.
- Turn off the power supply immediately when you find smoking, peculiar.

Function Introduction

BX-V75C receiving cards used for all kinds of full color LED display screen, support most of the module chip. 12nos T75 port on board, 24 nos RGB data, refresh rate can be reached to 5000Hz. Support Gigabit mode, asynchronous player and BX-VS/VSE/VHE synchronous sending card. Users can update the firmware online.

Simple install

Adopt the standard interface, standard hole specifications. Support connecting indicator light and test button from outside; 2 gigabit Ethernet ports; Support exchange of input and output. 12nos T75 on board

Interface

12nos T75 port on board, support E signal, maximum 64 scan mode, signal outputs. Support exchange the data from any interface, RGB colors will exchange in orders.

Split mode

Support 2 split modes, 3 split modes and 4 split modes, for width, can be different. Example: 2 split modes: first one is 128 pixels, another one is 64 pixels; 3 split modes: first one is 128 pixels, middle one is 128 pixels, last one is 64 pixels.

Data flow direction can be changed

Default is from right to left. According to your requirements, you can set as “left to right” “top to bottom” “bottom to top”

Support special-shaped screens

Support excursion of display data (from range 0-511 pixels). And maximum, users can set 384 in height for excursion.

Many scan modes

Use LedshowTV software, and support 64 , 32, 16, 8, 4 scan modes; Support without 138, and support 595, RT958 etc. By smart scan function, can support static screen, 2 to 32 scan modes.

Compatible with many chips

Support normal chip, PWM chip.

Better effects

Adopt high refreshment technology, support high refreshment and high gray scale.

Support 256, 512、 1024, 2048, 4096, 8192, 16384, 32768,65536.

Used for all kinds of situations, outdoor or indoor. Users can get a good effect by adjusting the refresh rate, display mode, etc.

Clock adjustment

Support adjustment from 10.42MHz to 31.25MHz. Satisfy cascade characteristics of different modules, has better effect. On the promise of refresh rate, will increase the width.

Blanking adjustment

Adjust the blanking, as to adjust the virtual light.

Maintenance

Receiving card supports read back function of configuration parameters; Support update online; It is convenient for customers to update and maintain.

Recommend loading

The receiving card can achieve the best display effect and application experience under the control area of 256*256. The display effect of the receiving card is directly related to the length of the on-load module. In order to ensure the smooth screen adjustment, we generally recommend the following settings (refresh priority, gray level 4096).

Scan mode	Value (Recommend)	Max value	Minimum refreshment rate (Recommend)
1/32	64	128	960
1/16	128	192	960
1/8	64	128	1440
1/4	64	128	1920

Note:

- ◆ All the above scan mode refer to the straight line. If the scanning method of 1/4 scan with 8 lines of data, please refer to 1/8 values, If 1/4 scan with 16 lines of data, you should refer to the 1/16 values.

If possible better to use the folio mode to improve the effect.

User Guiding

Choose Parameters

There are two Display mode : refreshment priority and brightness priority. Refreshment priority is for high refresh rate, and you will get good feedback by mobile phone or camera, but the brightness is lower. If you use brightness priority, you will get higher brightness but photo by mobile phone or camera may not so good. Usually,for indoor screen, brightness is not so important,so you can choose refreshment priority;But for outdoor screen,brightness is needed,in this situation,need to choose brightness priority.

➤ **Brightness mode**

For brightness mode, there are 3 modes: lower, normal or high brightness. If the display mode is fixed, then, the higher the brightness is, the lower the refreshment will be. Or, on the same refreshment, the control width will be smaller. So, when the brightness is enough, you can choose lower brightness mode, as to obtain a better refresh rate and shooting effect.

➤ **Gray grade**

On the same refresh rate, if the control size is the same, then, the gray grade is higher, the effect will be better. But if the gray grade is higher, the control size will be smaller. So, we usually suggest to use 4096 gray scale, do not over than 16384.

➤ **Refresh rate**

It is not correct that the refresh magnification is higher, the effect will be better. If the refresh rate is enough, the refresh magnification is lower, the shoot effect will be better.

➤ **Shift clock**

Replacement clock is also an important parameters. The higher the replacement clock is, the control size will be larger(on the same refresh rate). But some kinds of modules are not so good with quality, cannot use higher replacement clock, usually, there will be some special flashing on the screen.

➤ Gray from the first grade

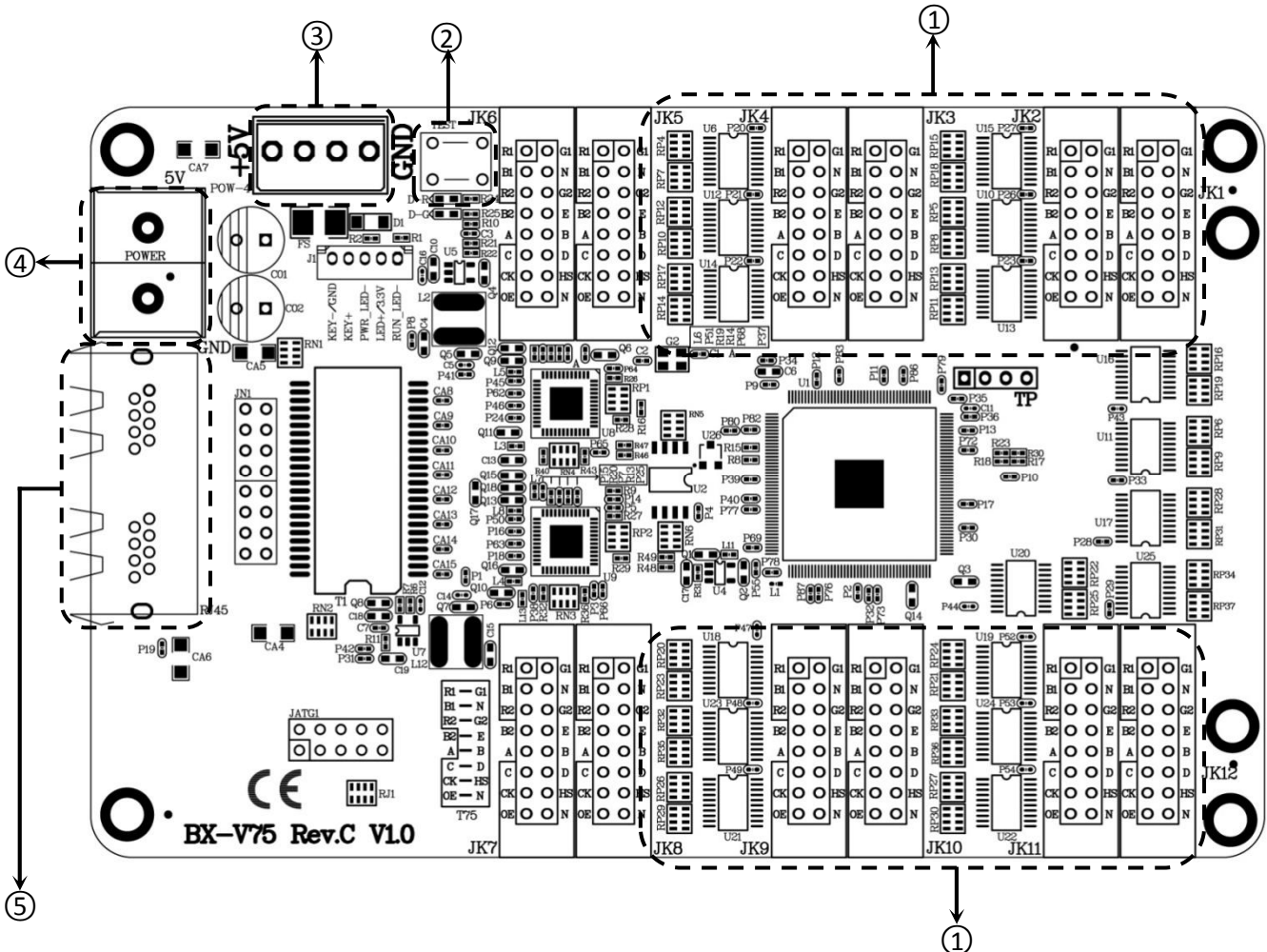
If users need better low gray effect, you can choose. But the effect will be not so good, it will be weird by your eyes. So, usually, we do not suggest.

Specification

Screen index	
Parameters	Specification
Minimum size	32 x 32
Control size	128*1024
Scan	Max 64 scan
Total pixels	128*1024
Row offset height	0-511
Row offset range	Max 384, setup the row height or data unit
Gray grade	Single LAN cable cascade receiving cards≤1024
Grayscale	≤65536
Refresh rate	Support 5000Hz, will be changed with the control width.
Application	All kinds of full color LED screens
Chips	All kinds of full color LED chips
Row decode chip	Support 138 , 5959 , 595 , 5266 , 2018 etc
Interface	12nos T75 , 24 RGB data
Brightness adjustment	256 degree

Details	
Input power supply	3V ~ 6V ; Please make sure the quality of power supply.
Power Dissipation	≤5W
Temperature	-40°C ~ 80°C
Size	143.6mm ϕ 91.7mm

INTERFACE DIAGRAM

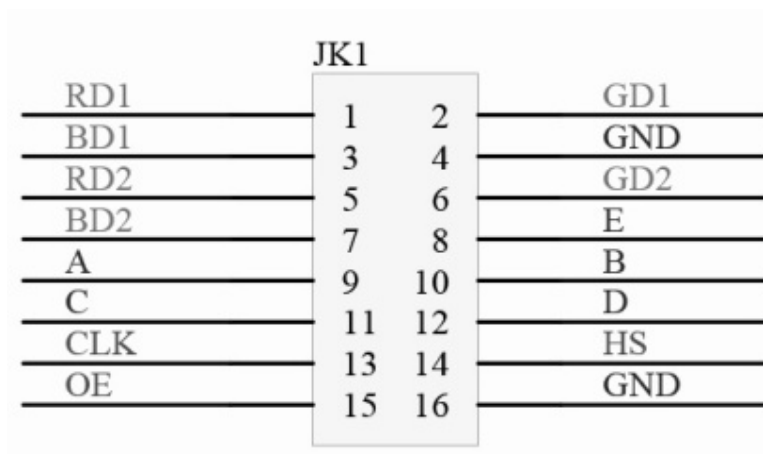


Interface		
1	T75 interface	T75 (JK1 , JK2 , JK3 , JK4 , JK5 , JK6 , JK7 , JK8)
2	TEST/SELECT	screen test button
3	Power	5Vpower interface ,DC volts, standard 5V ,support
4	Power terminal	5Vpower interface ,DC volts, standard 5V ,support
5	1000M	Gigabit port ,connect with sending card

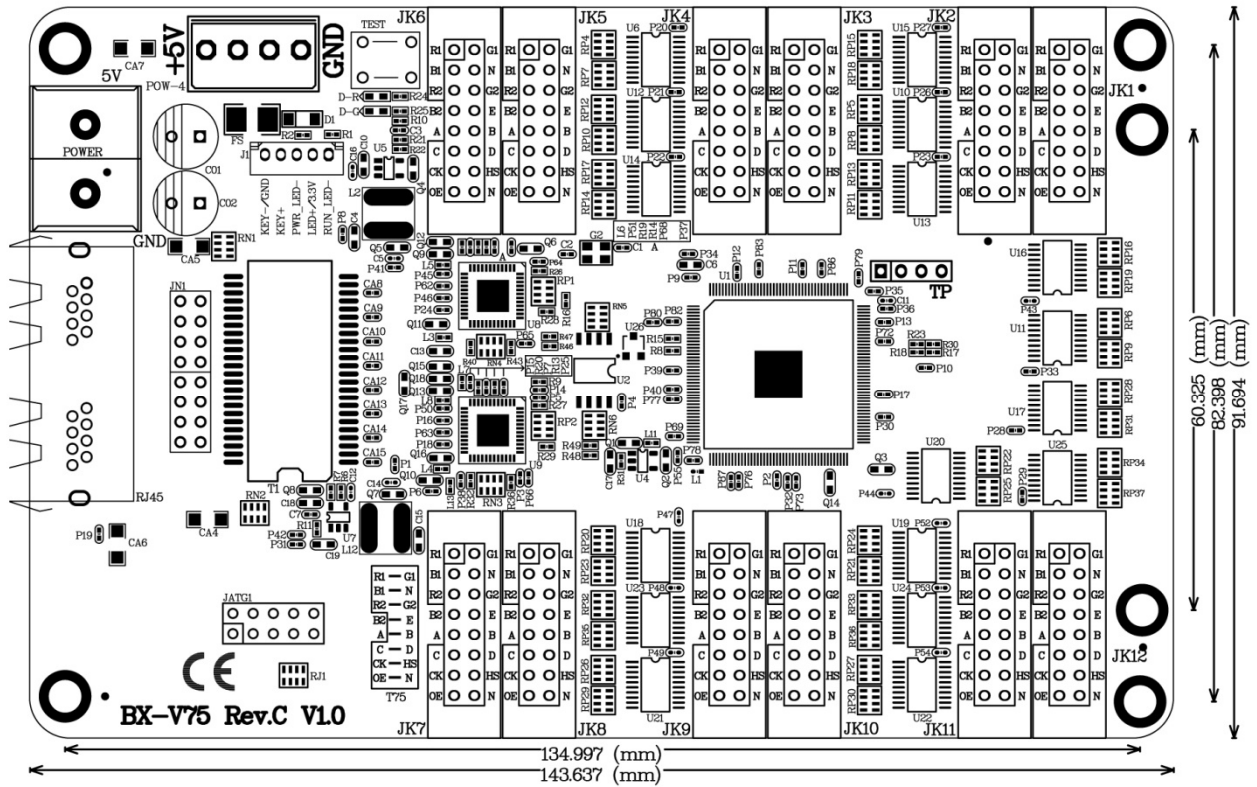
Interface Definition

T75 port definition :

Function	Pin no	Pin no	Function
R1	1	2	G1
B1	3	4	GND
R2	5	6	G2
B2	7	8	E
A	9	10	B
C	11	12	D
CK	13	14	HS
OE	15	16	GND



DEMENSION



FAQ

- ◆ Gigabit or Sending card

If need better shoot effect, choose sending card mode.

- ◆ Is there any affect for shooting by environment?

Usually, the environment brightness is the biggest fact for shoot. Cause the time of the camera shutter is according the the environment brightness.

In indoor, the brightness is lower, so, the shutter will be slower, usually, 1/60 - 1/200

seconds. In this situation, if the refresh rate is about 1000, the shoot effect will be better.

But if in outside, the brightness is higher, the shutter time will be faster, usually, faster than

1/800 seconds. In this situation, the refresh rate should be about 3000.

So, for same screen, the shoot effect in night is better then in day. And that is the reason

why outdoor screen needs a higher refresh rate.

Contact Us

Shanghai ONBON Technology Co.,ltd (Headquarters)

Address: 7 Floor, Tower 88, 1199#, North Qinzhou Road, Xuhui District, Shanghai City, China

Tel Phone: 086-21-64955136

Fax: 086-21-64955136

Website: www.onbonbx.com

ONBON (Jiangsu) Optoelectronic Industrial Co.,LTD

Address: 1299#, Fuchun Jiang Road, Kunshan City, Jiangsu Province, China

Sales Contacts

Tel: 0086-15921814956 0086-15800379719

Email: onbon@onbonbx.com

Second Development

Tel: 0512-66589212

Email: dev@onbonbx.com

iLEDCloud

Website: <http://www.iledcloud.com/>



Public Wechat



ONBON APP