



# Specification for BX-VSA sending card

Version : V1.0    Date: 2021.8.30

## Description

The BX-VSA video sending card adopts Gigabit network control technology, which can be applied to various screens with a load index of 1.3 million pixels.

The product structure is simple, easy to install, protocol-free docking, suitable for synchronization solutions such as light pole screen smart gateways.

The BX-VSA video sending card includes 1 HDMI input, 2 Gigabit Ethernet output interfaces, 1 brightness sensor and 1 RS485 interface, and can be designed as an RS232 communication interface according to project requirements.

## Features

- ◆ Single device can load 1.31 million pixels, the maximum horizontal is 3840 pixels, and the maximum vertical is 2500 pixels;
- ◆ Integrated 2 Gigabit Ethernet port output
- ◆ Support 1 HDMI input;
- ◆ Support 1 channel brightness sensor;
- ◆ Support 1 RS485 interface, and can be designed as RS232 communication interface according to project requirements.

## PARAMETERS

<b>Input video source</b>	
HDMI×1	VESA standard: 1920x1080@60Hz below compatible, HDMI 1.4

<b>Video output</b>	
NET×2	2 Gigabit Ethernet port output, connected to the LED display through the network cable, directly connected to the receiving card; Maximum is 1.31 million pixels,width≤3840, height≤2500;

<b>Audio input</b>	
AUDIO_IN	3.5mm Analog audio input interface

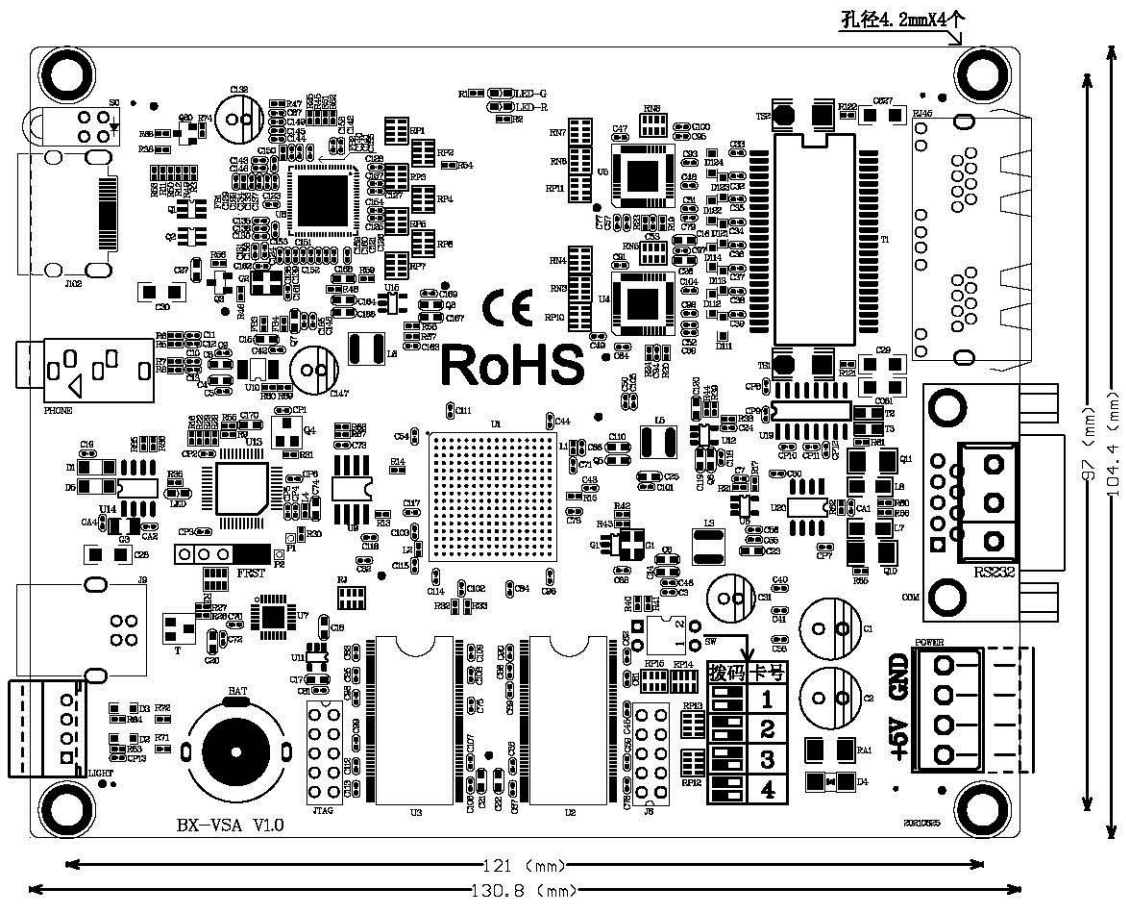
  

<b>Other port</b>	
LIGHT	Brightness sensor port
RS485/ RS232	RS485 port (RS232 is optional)

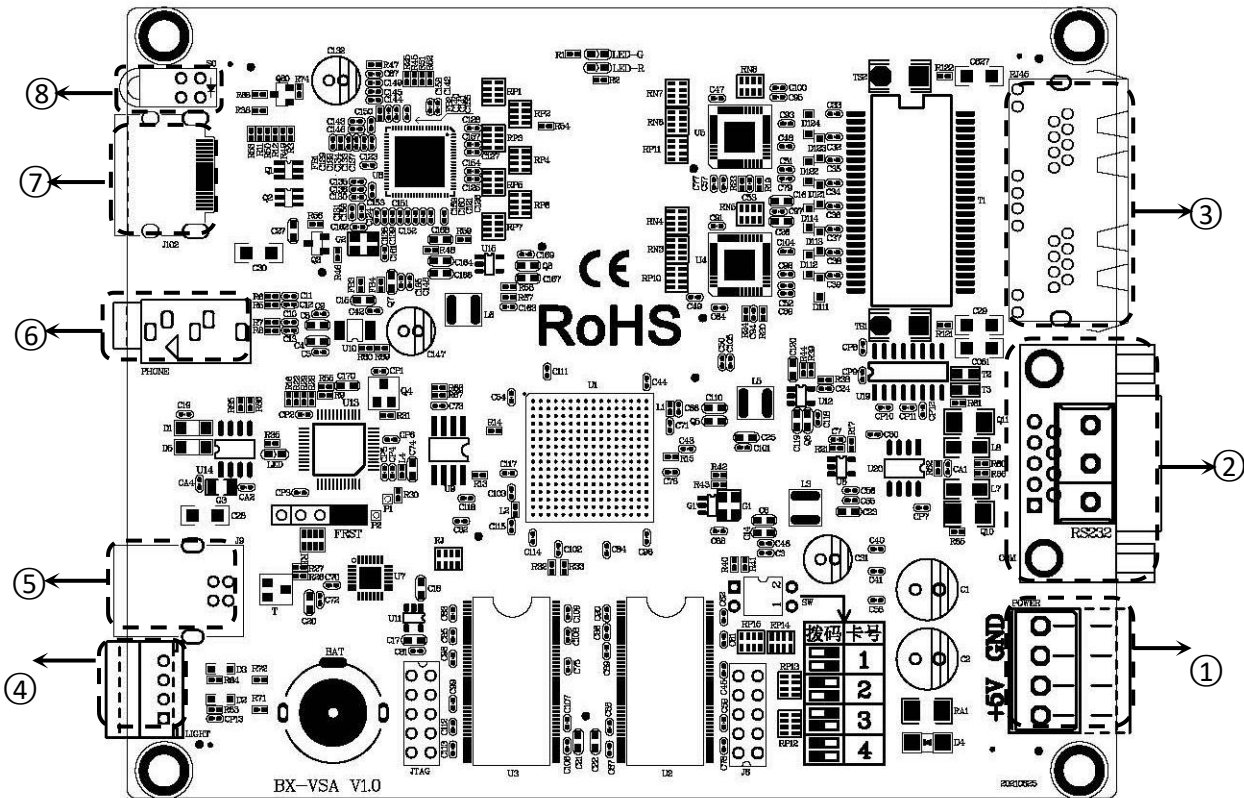
  

<b>Complete device specification</b>	
Input voltage	5V (3.3V ~ 6V)
Power	≤6W
Working temperature	-40℃~80℃
Environmental humidity	10%~90%
Operate software	LedshowTV、OVP Builder
Weight	About 100g

# DEMENSION



## Interface ports



Interface		
1	Power socket	5V power supply, DC voltage input, nominal voltage 5V, support 3.5V ~ 5.5V
2	RS485	Default is RS485 port, RS232 is optional
3	Ethernet port	Gigabit Ethernet port to connect with receiving card
4	LIGHT	Brightness sensor port
5	USB	USB serial port, use for debug
6	Audio input	1 Channel 3.5mm stereo
7	HDMI	HDMI external input
8	Indicator light	Red light: power indicator; Green: indicates the signal indicator

## CONTACT US

### **Shanghai ONBON Technology Co.,Ltd (Headquarters)**

Address: 7 Floor, Tower 88, 1199#, North Qinzhou Road, Xuhui District, Shanghai City, China

Tel:0086 15921814956

Website: [www.onbonbx.com](http://www.onbonbx.com)

### **ONBON (Jiangsu) Optoelectronic Industrial Co.,LTD**

Factory Address: 1299#, Fuchun Jiang Road, Kunshan City, Jiangsu Province, China

### **Sales Contacts**

Tel: 0086-15921814956 0086-15800379719

Email: [onbon@onbonbx.com](mailto:onbon@onbonbx.com)

Second Development Tel: 0512-66589212

Email: [dev@onbonbx.com](mailto:dev@onbonbx.com)

### **iLEDCloud**

Website: <http://www.iledcloud.com/>

