



BX-Y04 Version C Specification

Version : V1.0 Release date : 2022.8.8

Catalog

| | |
|-----------------------------------|---|
| Guiding | 1 |
| Safety note | 1 |
| Features | 3 |
| Function | 4 |
| Control area | 4 |
| Support high refresh | 4 |
| Multiple communication mode | 4 |
| Lager storage capacity | 4 |
| Support database | 5 |
| Abundant 3D stunt | 5 |
| Support Android app | 5 |
| Flexible program release | 5 |
| Online update firmware | 5 |
| Support various sensors | 6 |
| Relay function | 6 |
| Timing on/off screen | 6 |
| Secondary development | 6 |
| Technical parameter | 7 |
| Interface diagram | 9 |

Guiding

Safety note

- ◆ The input voltage is 3.5V ~ 5.5V.
- ◆ Please strictly ensure the power quality of bx-y series players.
- ◆ When you want to connect or unplug any signal cable or control cable, please confirm that all power cables have been unplugged in advance.
- ◆ Before any hardware operation, please turn off the power supply of the processor in advance and release the static electricity on you by touching the grounding surface.
- ◆ Please use the product in a clean, dry and ventilated environment.
- ◆ Do not use the product in high temperature, humidity and other environments.
- ◆ This product is an electronic product.
- ◆ Please stay away from fire source, water source and flammable and explosive dangerous goods.
- ◆ There are large-scale integrated circuit chips in this product. Please do not open the chassis or repair the equipment by yourself.
- ◆ In case of abnormal conditions such as smoking and peculiar smell, please turn off the power switch immediately and contact the

Product photos



Features

- ◆ On-board 4*HUB75 Interface ,one card to one screen,suitable for all kinds of small size LED full color screen.
- ◆ High performance CPU, hardware decoding, HD video playback smoothly .
- ◆ On-board 100M Ethernet port,audio port, Support USB port Wi-Fi module and 4G and GPS is optional.
- ◆ Support cluster control, especially suitable for large-scale urban outdoor advertising screen large-scale deployment, management Abundant 3D stunt and Flash subtitle .
- ◆ Support U disk display directly,also support importing display. Support Groups cluster management Support firmware update online.
- ◆ Support database,Very suitable for high-speed rail, hospitals, banks and other occasions of information release.
- ◆ Support temperature sensor/ temperature&humidity sensor /noise sensor/air quality sensor /wind speed &wind direction sensor /brightness sensor
- ◆ Adopter the second YQ protocol,and it is more convenient for customize.

Function

Control area

BX-Y04 Total pixels ≤ 64 K, the maximum width ≤ 1024 , the maximum height 512 .
4 nos T75 on board. one screen match with one card, used for small size full color screen and cluster control. Widely used in Led posters and Led pole screens bus screens etc.

Support high refresh

BX-Y series of controller support high refresh (here refers to the receiving card for LED screen refresh, users scan) or mobile phone camera shooting picture from time to time, no distortion, no scanning line, the true nature and excellent results.

Multiple communication mode

The controller is on board a 100M network interface, internal integrated 4G wireless module, WIFI module, also supports USB interface, external WIFI module. Built-in WIFI both as a hot spot (AP), but also as a terminal. Supports external 4G routers. For the general network topology, users can use the network cable directly access the router or switch, and management PC communication. For short-range wireless applications, the user can open the controller built-in WIFI, access to their own routers, to achieve online control management. Users can also open the controller's WIFI hot spots, access to their own PC controller, to achieve management control. For the controller hot spots, the user can set the password, the rights management.

Lager storage capacity

BX-Y08 provides high-capacity built-in flash memory, also supports external capacity expansion. It was built-in 4G flash memory, users can store 8 hours of

high-definition video. it provide SD card slot, allowing users to insert large capacity SD card, to expand capacity.

Support database

The controller support database area, supports multi-page display, supports MYSQL, SQL server and other format database in the near future.

Abundant 3D stunt

Support graphic text, subtitles, video, lunar calendar, dial, timing, temperature, humidity, announcements, weather forecasts areas. Text areas can be pictures or text, supporting a wealth of special effects, including curtain, pan, laser, mosaic, shutter and other common effects. Controller built-in GPU (graphics processing unit), support Abundant 3D stunt and FLASH subtitle.

Support Android app

BX-Y04 support Android APP LedshowYQ to add, edit and send program, very easy to operate. The APP support search screen, support multi language, support dynamic preview, video trans-coding function. Support gesture zoom in and out of partition function.

Flexible program release

Users can use PC software LedshowYQ to add, edit, preview, release. If network is not convenient, users can also use U-disk to import programs or plug-in and display. USB transmit distance is $\leq 3\text{M}$, It can be reach 10 M with a extension line.

Online update firmware

BX-Y series support remote upgrade firmware, users can use PC software LedshowYQ, iLEDCloud platform to upgrade the latest firmware, to enhance controller functionality, performance, solve bugs. The controller has built-in logging function, it can record various important events, and support remote consult, analyze and solve the fault. Support remote control BX-Y04 supports remote

control , very easy to switch programs by the remote .and also the screen brightness,volume,turn on and off screen ,testing etc.user experience comparable to TV remote control, especially suitable for indoor led screen management.

Support various sensors

Onboard temperature, humidity, and brightness sensor interface , which can accurately measure and display brightness, temperature, and humidity values. Provide accurate data reference for customers in places where strict control of temperature, humidity, or brightness is required.

Relay function

BX-Y series added relay function ,Match with VMF multi-function card,the controller supports remote start, shutdown control , effectively reduce the screen power consumption, saving energy.

Timing on/off screen

The software has a timed on-off function. After setting the startup and shutdown time, the computer will automatically start and shut down on time, achieving a reasonable use of human and material resources, greatly improving the service life and reliability of the display screen. When it is inconvenient for users to operate on the computer frequently, timing on/off can better achieve unattended functions.

Secondary development

Provide SDK file that support major systems such as WINDOWS/LINUX/ANDROID/iOS, including various dynamic libraries, communication protocols, and test routines;

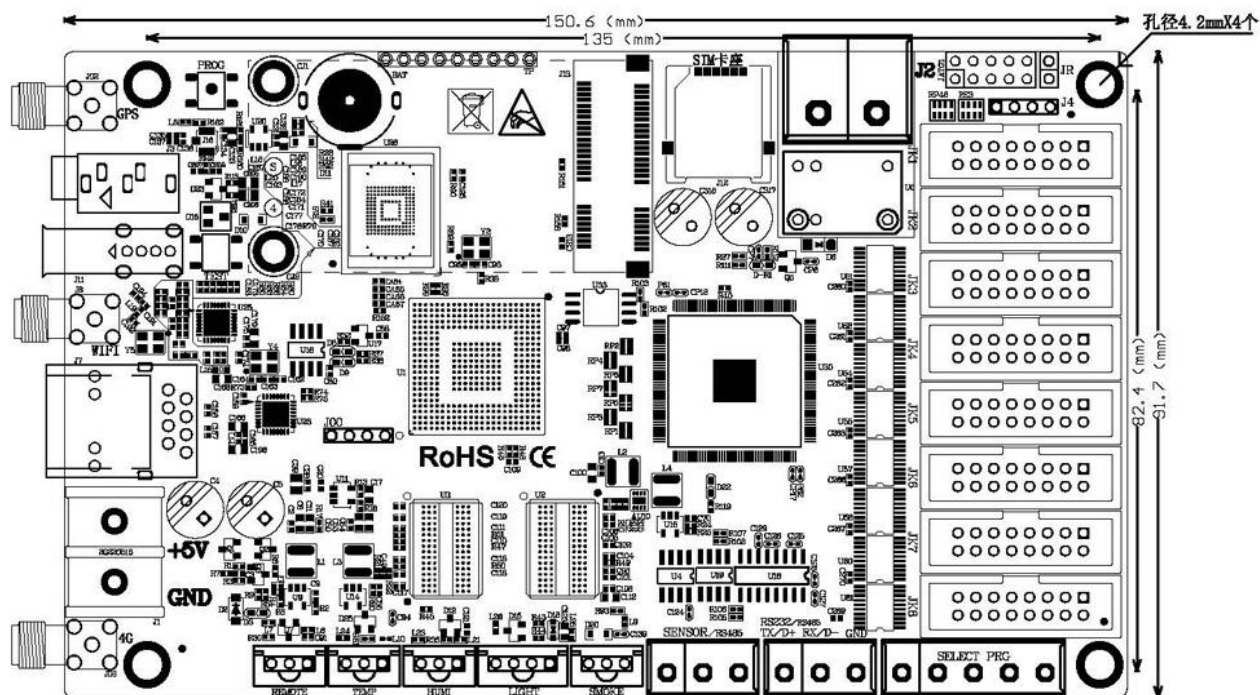
Support mainstream programming languages such as JAVA/C/C+/C #/Delphi, and support secondary development by users on various platforms to maximize the development and expansion of customized functions for users.

Technical parameter

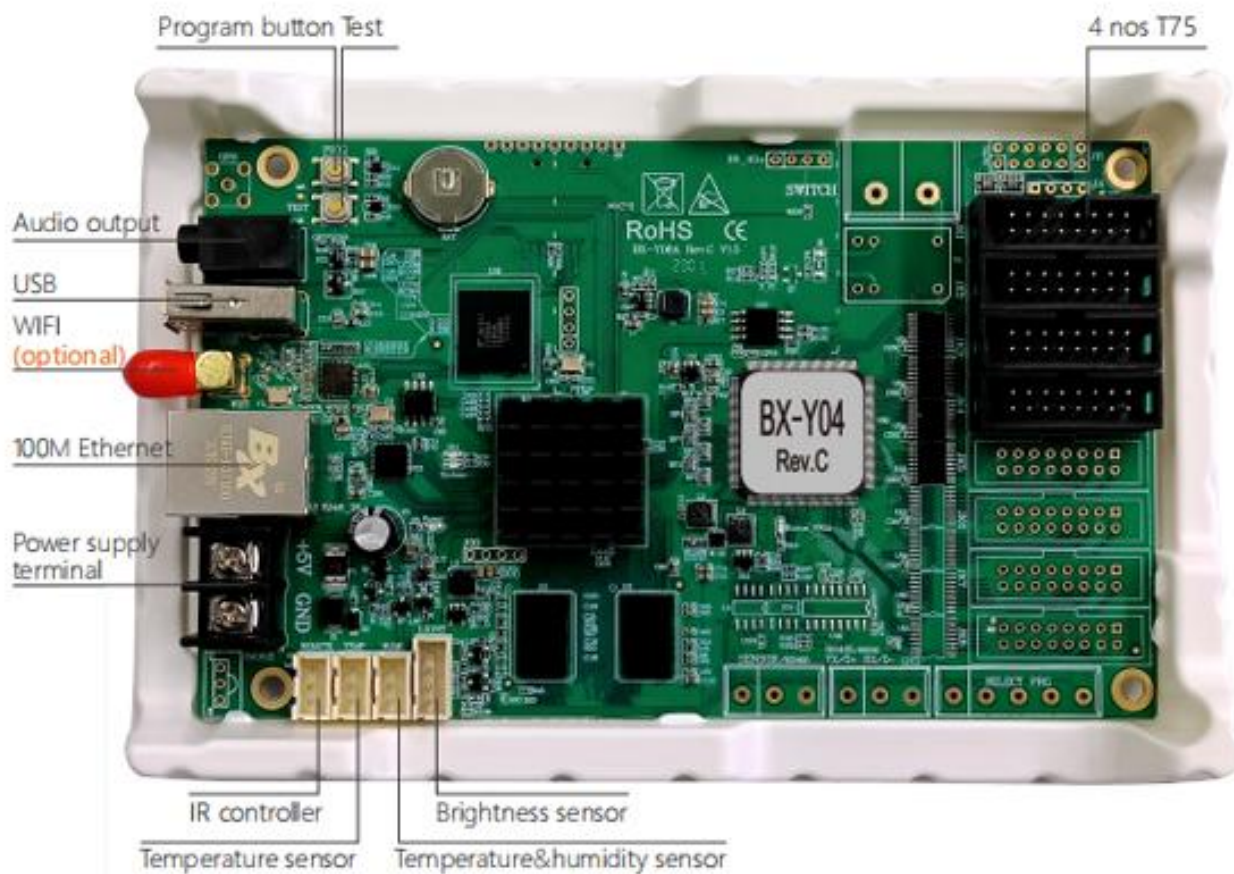
| Screen index | |
|---------------|---------------|
| Parameter | Specification |
| Minimum size | 64 × 64 |
| Maximum size | 512×128 |
| Maximum width | 1024 |

| Product specification | |
|-----------------------|---------------|
| Input power supply | 3.5V ~ 5.5V ; |
| Power Dissipation | ≤10W |
| Temperature | -40°C ~ 80°C |

Dimensional illustration



Interface diagram



Shanghai ONBON Technology Co.,ltd (Headquarters)

Address: 7 Floor, Tower 88, 1199#, North Qinzhou Road, Xuhui District, Shanghai City, China

Tel:0086 15921814956

Website: www.onbonbx.com

ONBON (Jiangsu) Optoelectronic Industrial Co.,LTD

Factory Address: 1299#, Fuchun Jiang Road, Kunshan City, Jiangsu Province, China

Sales Contacts

Tel: 0086-15921814956 0086-15800379719

Email: onbon@onbonbx.com

Second Development Tel: 0512-66589212

Email: dev@onbonbx.com

iLEDCloud

Website: <http://www.iledcloud.com/>