



# **BX-Y1 SPECIFICATION**

**Version : V1.4    Date : 2024.01.18**

# Directory

About software.....	3
Photo.....	4
Features.....	5
Guiding.....	6
Safety note.....	6
Functions.....	7
Control size.....	7
Support high refreshment.....	7
Multiple communication mode.....	8
Management platform.....	8
Lager storage capacity.....	8
GPS optional.....	8
Multiple image display in real time.....	9
Display image monitor.....	9
Graphic playback 3D special effects.....	9
Support database.....	9
Support mobile phone APP.....	9
Program publishing method is flexible.....	10
Update remotely.....	10
Support multiple sensors.....	10
Support IR.....	10
Timing power on/off.....	10
SDK.....	11
Technical parameters.....	11
Dimension.....	12
Interface.....	13

## **Instruction**

Thank you for purchasing our LED multimedia player. I hope you can enjoy the excellent performance of this product. The design of the LED multimedia player complies with international and industry standards, but if improperly operated, it may still cause personal injury and property damage. In order to avoid the danger that the equipment may bring and benefit from your equipment as much as possible, please follow the relevant instructions in this manual when installing and operating the product.

## **About software**

The software installed on this product may not be changed, decompiled, disassembled, decrypted or reverse engineered. The above acts are illegal.

## **Features**

- ◆ Various network communication methods, onboard 100M network interface, standard WiFi, optional 4G module.
- ◆ Optional GPS function, accurate positioning, real-time display of mobile track on the car screen.
- ◆ Realistic 3D graphic display stunts to bring users a more perfect viewing experience
- ◆ Support U disk expansion to 256GB, U disk plug and play.
- ◆ Support group control, can broadcast programs, especially suitable for large-scale deployment and management of outdoor advertising screens in cities.
- ◆ Software upgrade is convenient, you can achieve remote upgrade through management software or cloud platform, without going to the scene.
- ◆ On board brightness sensor, temperature sensor, temperature and humidity sensor interface.
- ◆ The playback screen can be monitored in real time.
- ◆ Support multi-screen picture synchronization function.
- ◆ Support remote control, rich in functions, you can order programs, adjust brightness, volume, screen test, etc.
- ◆ Support mobile phone APP software operation, convenient for users to remotely and conveniently control program release and management.
- ◆ There are various methods for adjusting the brightness of the screen, which can be adjusted manually or automatically by an external brightness sensor.
- ◆ The smoothness of Y series screen movement is greatly upgraded on the basis of YQ series products, whether it is left shifting of subtitles or image and text conversion can be smooth and smooth.
- ◆ Supports various types of regions, including graphics, subtitles, video, lunar calendar, dial, timing, temperature, humidity, announcements, weather forecast.
- ◆ Support database area, very suitable for high-speed rail, hospitals, banks and other occasions that need to release updated information in real time.
- ◆ Provide C #, JAVA, VB, C ++ complete set of development tools, which greatly facilitates project customization and secondary development.

## Guiding

### Safety note

- ◆ The input voltage of the power supply of this product is 3.3V ~ 6V, please strictly guarantee the power quality of BX-Y series players.
- ◆ When you want to connect or unplug any signal line or control line, please make sure that all power cords have been unplugged in advance.
- ◆ Before performing any hardware operation, please turn off the power of the LED video processor in advance and release your body by touching the grounded surface static electricity.
- ◆ Please use in a clean, dry and ventilated environment, do not put this product in high temperature, humidity and other environments.
- ◆ This product is an electronic product, please keep away from fire, water and flammable and explosive dangerous goods.
- ◆ This product has a large-scale integrated circuit chip, please do not open the case or repair the device yourself.
- ◆ If you find any abnormal conditions such as smoke or odor, please immediately turn off the power switch and contact the dealer.

## Functions

### Control size

The Y1 controller has one Gigabit output network port, with a total pixel of 600K pixels: 1024 × 600, a maximum width of 8192 pixels, and a maximum height of 2048 pixels. The control area is flexible, the display function is rich, and the cost performance is super high. Applicable to small and medium-sized full-color screens, door lintel screens, car screens, light pole screens, super long screens.

### Support high refreshment

Y series products support high refresh (refresh here refers to the scanning refresh of the receiving card for the LED screen). When the user uses the camera or mobile phone to shoot the large LED screen, the picture will not be distorted, there is no scan line, real and natural, and the effect is excellent. The product supports arbitrary adjustment of the screen movement speed, the screen movement is smoother, and the display effect is smoother when the text is moved to the left.

## **Multiple communication mode**

The communication mode of the controller is very rich. It is equipped with a 100M network interface and supports onboard WIFI. You can choose 4G module (onboard), or you can choose an external 4G router with USB interface, set to server mode or WEB mode, the controller can log in to the management platform. For general intranet topologies, users can use network cables to directly access routers or switches to manage PC communications. For short-range wireless applications, users can turn on the built-in WIFI of the controller and access their own routers to achieve online control and management. Users can also turn on the WIFI hotspot of the controller, connect their PC to the controller, and realize management control. For the hotspots of the controller, users can set passwords and perform rights management.

## **Management platform**

The controller provides a rich control and management software platform, including PC software LedshowYQ and cloud platform iLEDCloud. The PC software LedshowYQ runs on the user's screen manager's PC and supports mainstream operating systems such as Windows XP, win7, and win10. The software provides comprehensive and rich controller configuration, program scheduling, and program sending functions.

The cloud platform iLEDCloud is a multimedia information publishing platform provided by ONBON technology. Its core server is hosted on Alibaba Cloud, providing excellent reliability and stability.

Users only need a browser to use the platform, which can edit programs remotely, preview the program, and play it regularly and at a fixed time. Users can log in and use the cloud platform through mobile phones, pads and pcs. If the user is a LAN application environment, you can choose the PC software LedshowYQ provided by us to control and manage. If the user's environment needs to cross the public network, you can access the iLEDCloud cloud platform and manage it through a web browser.

## **Lager storage capacity**

The controller has built-in 4G flash memory, which can store high-definition video. Support U disk expansion to 256GB, U disk plug and play, can also be imported to play.

## **GPS optional**

The product can be equipped with GPS function to accurately locate the vehicle. The vehicle screen can display the vehicle trajectory in real time, which is convenient for understanding the real-time information of vehicles and personnel, and achieve better

vehicle management and scheduling.

The controller is used in conjunction with the GPS antenna. After logging in to the iLEDCloud platform, in addition to functions such as remote editing of programs, previewing of programs, and scheduled fixed-point playback, when the controller obtains the returned positioning signal, it can locate the screen position. The satellite map positioning interface of the iLEDCloud cloud platform shows the location of the screen.

### **Multiple image display in real time**

The product is simply configured through the supporting Ledshow YQ software. After setting a specific time in the software, multiple screens with the same screen parameters will achieve the effect of simultaneous display of multiple screens at the set time.

### **Display image monitor**

The controller supports the monitoring function of the playback screen. After the program is delivered to the screen, the user can monitor the playback to view the preview of the playback effect of the program, and can adjust the content of the program in time without going to the scene where the screen is located.

### **Graphic playback 3D special effects**

The supported area types are rich, including graphics, subtitles, video, lunar calendar, dial, timing, temperature, humidity, announcements, weather forecast.

The pictures or text added in the graphic area support a wealth of special effects, including common effects such as curtain, pan, laser, mosaic, and blinds. Users can set pictures or text to realistic 3D display effects through simple operations, such as raindrops, broken screens, cabinet rotation, louver rotation and other colorful viewing effects, giving users a brand new playback experience.

### **Support database**

Support database area function, can connect to MySQL, sqlserver and other format databases, and can display on multiple pages. This function is very suitable for high-speed rail, hospitals, banks and other occasions that need to release updated information in real time.

### **Support mobile phone APP**

Y series products can be controlled and managed by mobile APP, APP software is simple



to operate, easy to learn and understand. Users can realize wireless office through mobile phones and tablets, easily edit programs and send data anytime and anywhere. APP supports searching and adding screens, supports multiple languages, supports dynamic preview, and video transcoding function. Support gestures to zoom in and out of the partition function.

### **Program publishing method is flexible**

Users can use the PC software LedshowYQ to arrange, preview and release programs. If networking is not convenient, you can also use U disk to import programs or plug and play.

### **Update remotely**

The controller supports remote upgrade. Users can perform remote upgrade through PC software LedshowYQ and cloud platform iLEDCloud to improve the function and performance of the controller and solve bugs. The controller has a built-in log function, which can record various important events, and can be consulted and analyzed remotely to solve the fault.

### **Support multiple sensors**

The product's onboard interface is connected to temperature, humidity and brightness sensors, which can accurately measure and display the brightness, temperature and humidity values. Provide customers with accurate and accurate data references in places that require strict control of temperature, humidity or brightness.

### **Support IR**

The controller supports infrared remote control, which can realize program on demand and lock. Can easily adjust the screen brightness, volume, screen switch, test, etc., experience comparable to TV remote control, especially suitable for the convenient management of indoor display screen.

### **Timing power on/off**

The software has the function of timing switch on and off. After setting the startup and shutdown time, the computer will automatically start and shutdown on time, so as to make reasonable use of manpower and material resources, and greatly improve the service life and reliability of the display screen. When the user is often inconvenient to operate on the edge of the computer, the timer switch can better achieve the unattended function.

## **SDK**

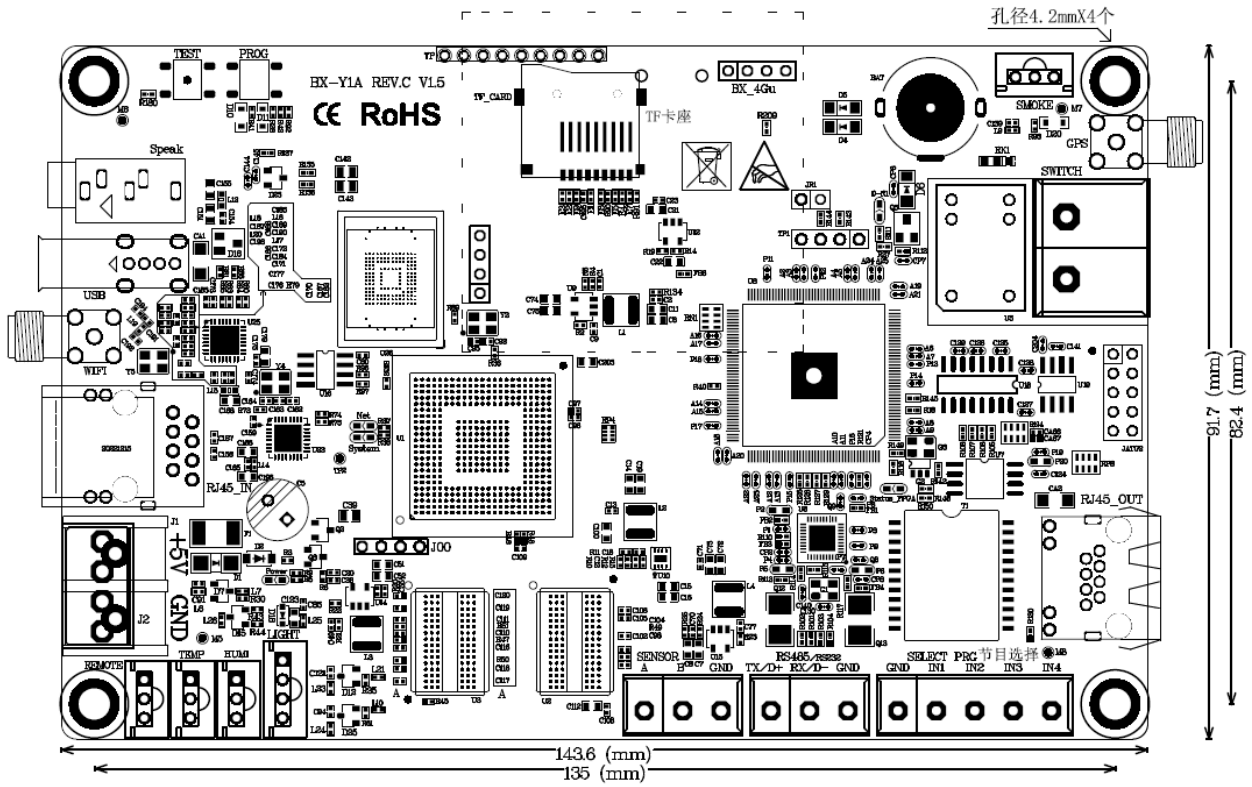
The product supports dynamic areas and provides a complete set of development tools for c #, java, VB, and C ++. Support C ++ development of Linux system, and open communication protocol, support http protocol communication, users can carry out secondary development of control card according to their needs, and realize special functions.

## **Technical parameters**

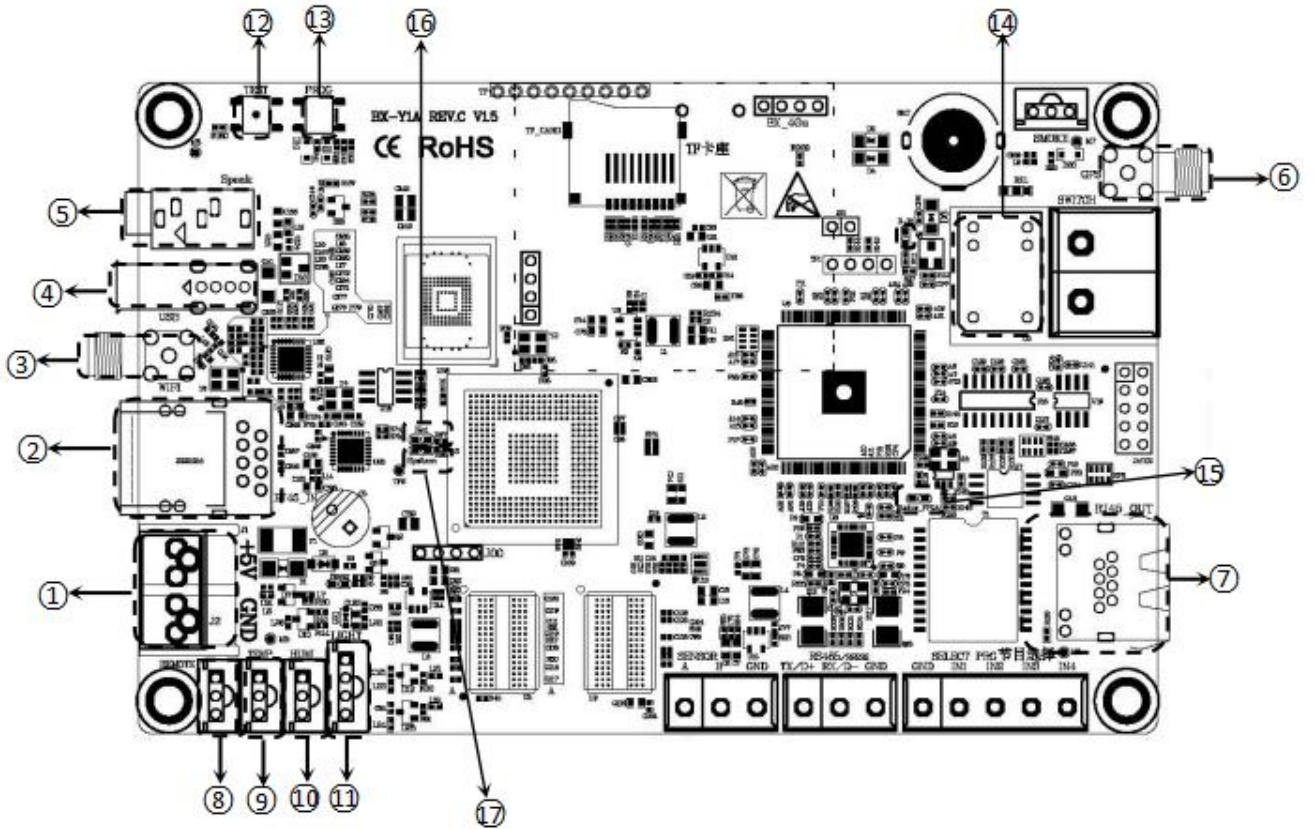
Parameters	Specification
Min control size	64 × 64
Max control size	1024×600
Max height	8192
Max height	2048

Input power supply	5V ( 3.3V ~ 6Vwide voltage )
Power	≤10W
Working temp	-40°C ~ 80°C

# Dimension



# Interface diagram



1	Power terminal	5V power supply port, DC input, 5V, support 4V~6V
2	100M	100M Ethernet connect with computer
3	Antenna	WIFI Antenna
4	USB	USB port to transfer program
5	AUDIO	Audio output port
6	Antenna	Connect GPS antenna
7	Output network	Connect receiver card
8	IR	IR connection interface
9	LIGHT	Brightness sensor interface
10	HUMI	Humidity sensor interface
11	TEMP	Temp sensor interface
12	TEST	Testing button
13	PROG	Program switch button
14	Sim card slot	Connect Sim card
15	FPGA indicator	Flashing is normal, while constant on or off indicates abnormal status.
		When it is started, it is always on, and flashing twice

16	Cloud indicator	and pausing indicates that the cloud platform has been successfully connected. When it flashes rapidly, it indicates that the cloud platform has not been successfully connected, and the cloud mode is not on and is always on.
17	Program indicator light	When it starts, it is always on, and if it flashes twice and pauses, it indicates that the program is normal. Other states indicate that the program is abnormal.

## **CONTACT US**

### **Shanghai ONBON Technology Co.,Ltd (Headquarters)**

Address: 7 Floor, Tower 88, 1199#, North Qinzhou Road, Xuhui District, Shanghai City, China

Tel Phone: 086-21-64955136

Fax: 086-21-64955136

Website: [www.onbonbx.com](http://www.onbonbx.com)

### **ONBON (Jiangsu) Optoelectronic Industrial Co.,LTD**

Address: 1299#, Fuchun Jiang Road, Kunshan City, Jiangsu Province, China

### **Sales Contacts**

Tel: 0086-15921814956 0086-15800379719

Email: [onbon@onbonbx.com](mailto:onbon@onbonbx.com)

### **Second Development**

Tel: 0512-66589212

Email: [dev@onbonbx.com](mailto:dev@onbonbx.com)

### **iLEDCloud**

Website: <http://www.iledcloud.com/>



Public Wechat



ONBON APP