



BX-Y3A Specification

Version : V1.1 Release data : 2021.4.7

Catalog

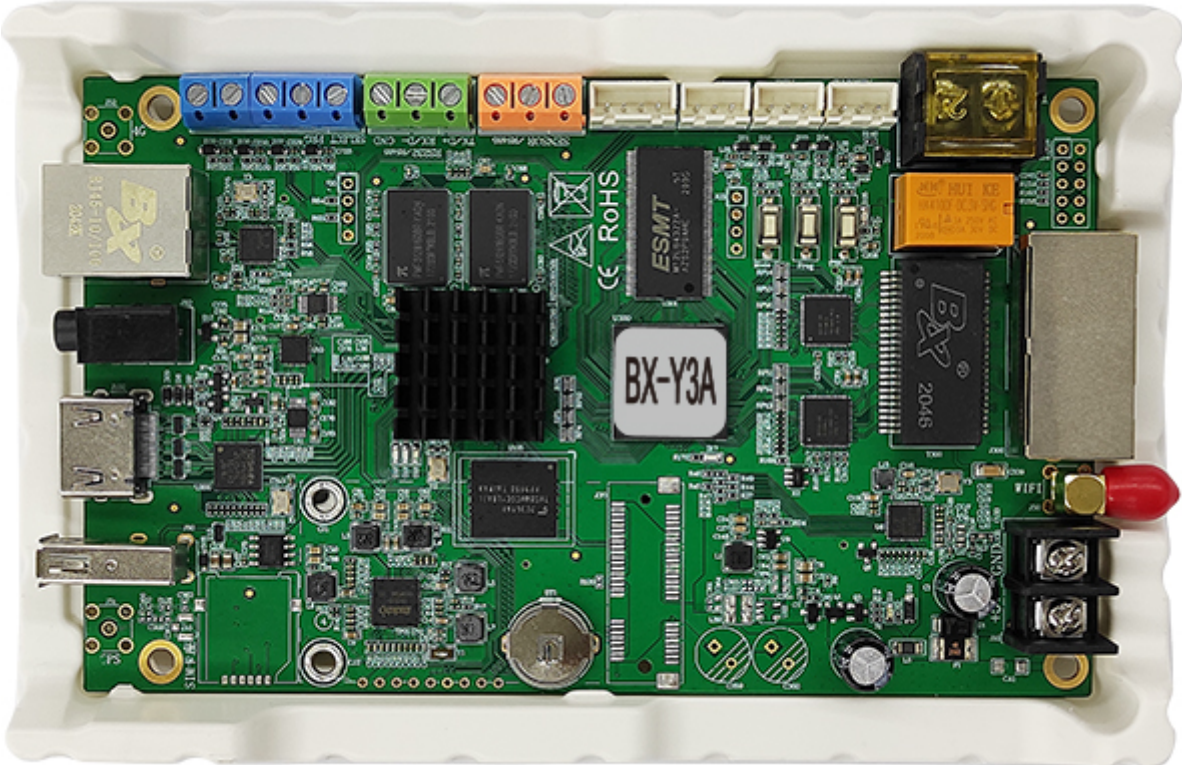
Guiding.....	2
Safety notes.....	2
Photo.....	3
Characters.....	4
Function instruction.....	5
Support high refresh.....	5
Multiple communication mode.....	5
Large storage capacity.....	5
HD video playback.....	5
Synch&Asynch dual mode.....	6
GPS is Optional.....	6
Support Traffic Guiding Screen.....	6
Selecting Program by 4 bit IO.....	6
Abundant 3D stunt.....	6
Support database.....	6
Support Mobile App.....	7
Flexible program release methods.....	7
Support many sensors.....	7
Support remote control.....	7
Timer switch screen.....	7
Second Development.....	8
Technical specifications.....	8
Dimension diagram.....	9
Interface diagram.....	10

Guiding

Safety notes

- ◆ Input voltage is 5V, voltage range is from 3.5V-5.5V, please make sure the quality of the power supply of BX-Y series.
- ◆ Please make sure that all the power supply cables are plugged off when you want to connect or plug off any signal or controlling cables.
- ◆ Please make sure that all the power supply cables and signal cables are plugged off when you need to put in or take off the hardware equipment.
- ◆ Please make sure the environment is clean, dry and ventilated when you use this product, also, do not put this product to a high temperature and wet environment.
- ◆ This product is electronic products, please keep away from fire, water source and flammable&combustible products.
- ◆ There' s high pressure components in this products, please do not open the box and repair it by yourself.
- ◆ Turn off the power supply immediately when you find smoking, peculiar smell or something unusual. And contact with us soon

Photo



Characters

- ◆ Control size 1280 × 1024, total pixels ≤ 1280k points, 2 gigabit network ports for output.
- ◆ Support mixed playback of external video source and local signal.
- ◆ Support 2 1080p local video areas and 1 1080P@60Hz External video area.
- ◆ High performance CPU, hardware decoding, smooth HD video playback, and realistic 3D graphic display stunts bring users a more perfect viewing experience.
 - ◆ Standard 8gbyte memory, onboard SD card holder and USB interface, convenient capacity expansion, supporting USB expansion to 256gb.
 - ◆ USB flash disk supports plug and play, and can also be imported into memory for playback. It is very suitable for publishing programs in places with inconvenient network connection.
 - ◆ Various networking communication modes, onboard Ethernet network communication interface, standard WiFi, optional 4G and GPS.
- ◆ Support group controlling, group sending program.
- ◆ Support updating firmware online.
- ◆ On-board RS232/485 communication port, support brightness sensor, temperature sensor, temperature and humidity sensor, noise sensor, air quality sensor, wind direction and win speed sensor, etc.
 - ◆ Support IR controller as to select program, adjust brightness, volume, screen testing, etc.
- ◆ Support mobile APP.
- ◆ UV three-protection glue for all types, national standard 85 protection level, dust prevention, damp proof, anti-static, salt-spray proof;
- ◆ -40 °C ~ 80 °C, 3.5v-5.5v wide voltage, 7 * 24 hours power-on, fault rate ≤ 0.3%

Function instruction

BX-Y3A on board 2 gigabit ports, connect with receiving card, Total 1280K pixels, the maximum width 19200, the maximum height 1920., used for medium size full color screen and cluster control.

Support high refresh

BX-Y series of controller support high refreshment (here refers to the receiving card for LED screen refresh, users scan) or mobile phone camera shooting picture from time to time, no distortion, no scanning line, the true nature and excellent results.

Multiple communication mode

The controller is on board a 100M network interface, internal integrated WIFI module, also supports USB interface, external WIFI module. Built-in WIFI both as a hot spot (AP), but also as a terminal. Supports external 4G routers. For the general network topology, users can use the network cable directly access the router or switch, and management PC communication. For short-range wireless applications, the user can open the controller built-in WIFI, access to their own routers, to achieve online control management. Users can also open the controller's WIFI hot spots, access to their own PC controller, to achieve management control. For the controller hot spots, the user can set the password, the rights management.

Large storage capacity

BX-Y3A, built in 8G storage for high resolution video. And support extending to 256GB.

HD video playback

Support 2 1920 × 1080@30Hz Internal video partition, the controller adopts high-performance CPU and hardware decoding, which can play HD video smoothly.

The controller provides one channel of HDMI input, and the external video can be played as a video area to realize the picture in picture effect. The external video source can also be played in full screen to achieve synchronization effect.

Synch&Asynch dual mode

Dual-mode player supports not only external video source independently playing (synchronous mode) and local program independently playing (asynchronous mode), but also supports displaying together with external video source and local program. And users can switch mode manually or timing switching.

GPS is Optional

GPS function is optional, you can use for vehicle-mounted screen. Controller connects with GPS antenna, log in iLEDCloud, then you can edit program remotely, preview

Support Traffic Guiding Screen

Support general traffic protocol, for many kinds of traffic guiding screen projects.

Selecting Program by 4 bit IO

Selecting program by outside IO is to choose program by outside signal, as to display different programs by different signal. ON/OFF Remotely Port Connect relay module with controller, as to control ON/OFF of air condition, fan, power supply of screen, etc.

Abundant 3D stunt

Support graphic text, subtitles, video, lunar calendar, dial, timing, temperature, humidity, announcements, weather forecasts areas. Text areas can be pictures or text, supporting a wealth of special effects, including curtain, pan, laser, mosaic, shutter and other common effects. Controller built-in GPU (graphics processing unit), support Abundant 3D stunt and FLASH subtitle.

Support database

The controller will support database area, supports multi-page display, supports MYSQL, SQL server and other format database in the near future.

Support Mobile App

Y series supports management by mobile APP. APP software is very easy to understand and operate. Users can edit, send data by mobile phone, pad. APP supports searching screen, supports multi languages, supports dynamic preview, video transcoding function. Supports zoom in and out manually.

Flexible program release methods

Users can use PC software LedshowYQ to add ,edit , preview, release. If network is not convenient, users can also use U-disk to import programs or plug-in and display. Online update firmware BX-Y series support remote upgrade firmware, users can use PC software LedshowYQ, iLEDCloud platform to upgrade the latest firmware, to enhance controller functionality, performance, solve bugs. The controller has built-in logging function, it can record various important events, and support remote consult, analyze and solve the fault.

Support many sensors

On-board temperature, humidity, brightness ports & RS485 port for many kinds of environmental sensors. It can measure and display temperature, humidity, brightness, noise, PM2.5, PM10, wind direction, wind speed, etc.

Support remote control

BX-Y3A supports remote control, very easy to switch programs by the remote .and also the screen brightness, volume, turn on and off screen, testing etc. user experience comparable to TV remote control, especially suitable for indoor led screen management.

Timer switch screen

The LedshowYQ software support timing switch screen. After setting the turn on and turn off time, the computer will turn on the machine on time and automatically. It can make use of manpower and material resources reasonably, and greatly improve the service life and reliability of the display screen. When the user is inconvenient to operate on the side of the computer, this function can better realize.

Second Development

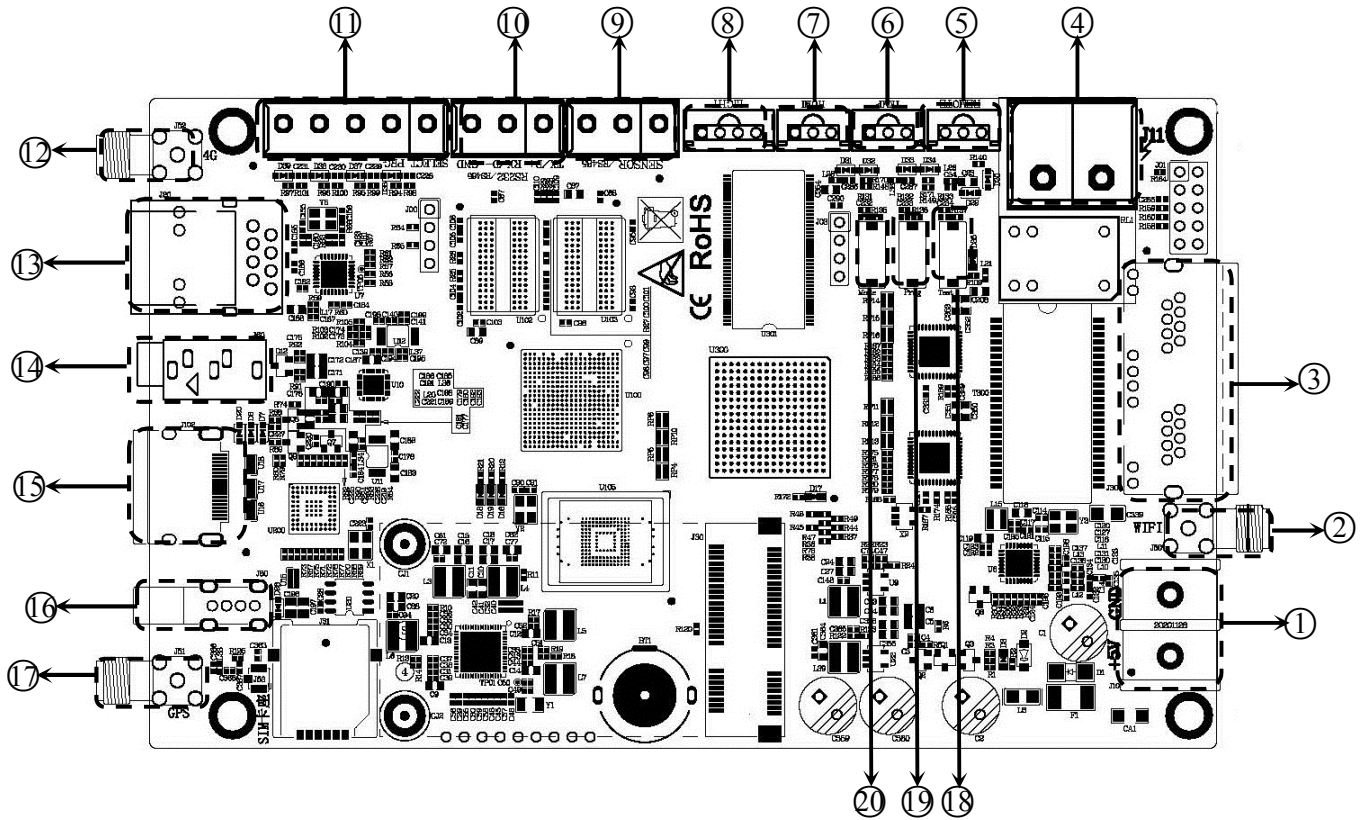
Support dynamic area, offer C#, JAVA, VB, C++ developing tool. Support C++ development on Linux system, we opened communication protocol, and support http protocol, users do second development for our controller according to your requirement as to realize some special functions

Technical specifications

Screen index	
Parameter	Specification
Minimum size	64 × 32
Maximum size	1280×1024
Maximum width	19200
Maximum height	1920

Controller specification	
Input voltage	5V (3.5V ~ 5.5V wide working voltage)
Power consumption	≤10W
Operating ambient temperature	-40°C ~ 80°C

Interface diagram



Key instruction		
1	5V	5V Power interface, DC voltage input, voltage 5V, support (3.5V~5.5V)
2	Antenna	Connect WIFI
3	100M	Ethernet interface connected to receiving cards
4	SWITCH	Switch interface
5	IR	IR controller interface
6	TEMP	Temperature sensor interface
7	HUMI	HUMI/TEMP sensor interface
8	LIGHT	Brightness sensor interface
9	RS485	RS485 communication port, for environmental sensor
10	RS485/ RS232	RS232/RS485 communication port, Standard RS485. RS232 is optional
11	PROG	Program switch button
12	Antenna	Connect 4G (optional)

13	100M	USB port, Connect with USB disk, external WIFI module
14	AUDIO	Audio out interface
15	HDMI	HDMI input interface
16	USB	USB port, Connect with USB disk, external WIFI module
17	Antenna	Connect GPS (optional)
18	TEST	Test button
19	PROG	Connect with outside control IO
20	MODE	Display mode switch interface

CONTACT US

Shanghai ONBON Technology Co.,Ltd (Headquarters)

Address: 7 Floor, Tower 88, 1199#, North Qinzhou Road, Xuhui District, Shanghai City, China

Tel:0086 15921814956

Website: www.onbonbx.com

ONBON (Jiangsu) Optoelectronic Industrial Co.,LTD

Factory Address: 1299#, Fuchun Jiang Road, Kunshan City, Jiangsu Province, China

Sales Contacts

Tel: 0086-15921814956 0086-15800379719

Email: onbon@onbonbx.com

Second Development Tel: 0512-66589212

Email: dev@onbonbx.com

iLEDCloud

Website: <http://www.iledcloud.com/>

