




LEDSHOWYQ Add Database

User Manual

 Before you use the brightness sensor,
please read this file first and save it for

We will struggle and serve for the booming development of LED industry!

Statement

Any companies or privates cannot copy, transcribe or translate part or whole content of this file without our written permission. And cannot use it on any business or benefit filed with any forms.

The specifications and information which are mentioned on the file is for reference only, if there' s update, we will not inform you. This file is only for guidance, and all information will not be for any promises.

LedshowYQ 2018 Add database

Brief Introduction

Thanks for purchasing LED control card. The design of the control card is according to the international and industrial standard, but if the operations are incorrect, it will probably bring you personal injury and financial harm. As to avoid these and win more from your equipment, please obey the specifications of this file.

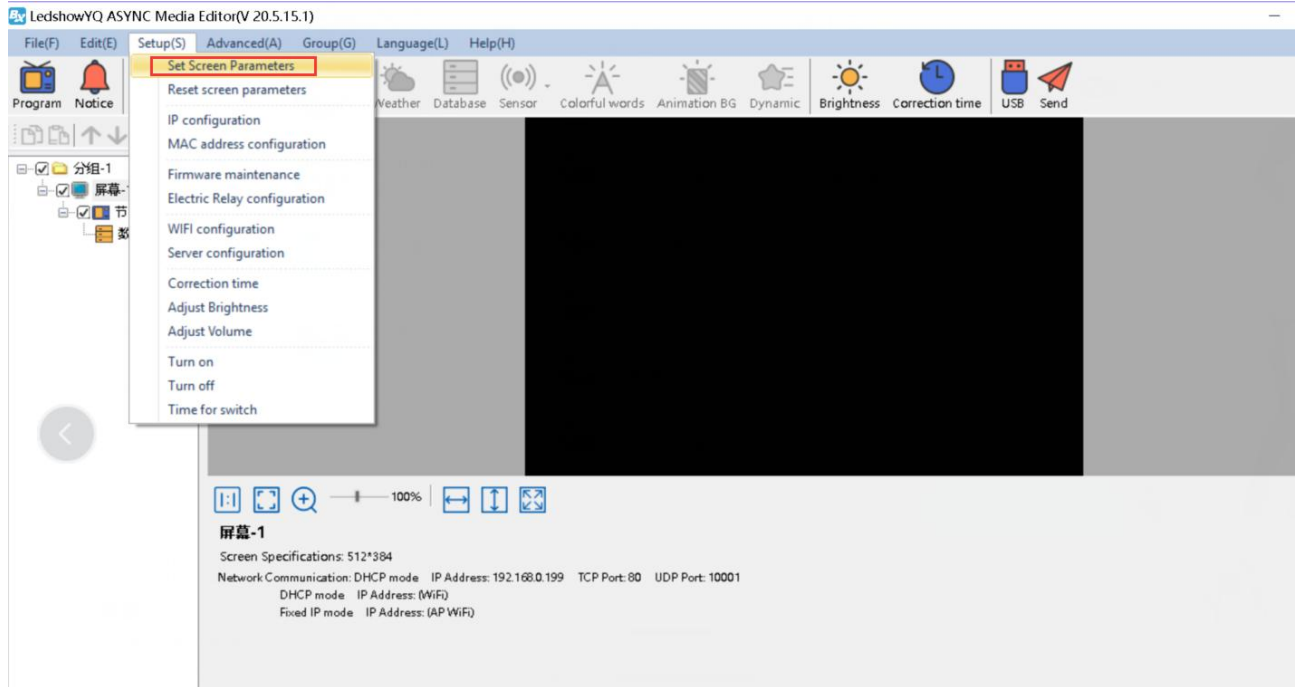
About Software

Cannot do any modification, decompilation, disassembling, decoding or reverse engineering on our software, it' s illegal.

User Manual

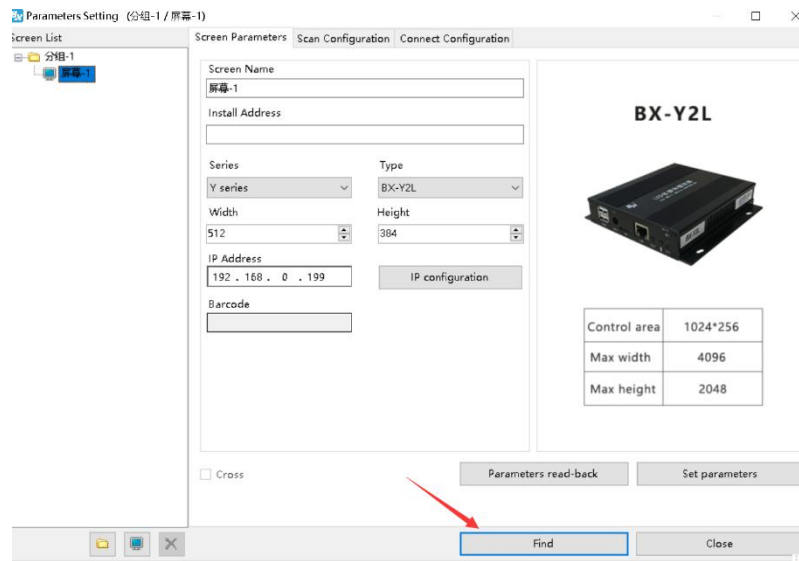
Add Screen

Click “set screen parameters”, enter passwords “888”, as below:



Picture 1

Click “Find” :



Click “add” , and then back to the page of “screen parameters”, as to modify width, height, IP address according to your requirements.

Add screen

Online card list

Series: YQ series | Type: BX-YQ1(G)-75

Width: 256 | Height: 384

IP Address: 192 . 168 . 1 . 199

Screen Name: []

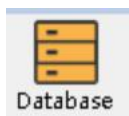
Install Address: BX-YQ1(G)-75

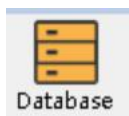
Control area	384*384
Max width	384
Max height	384

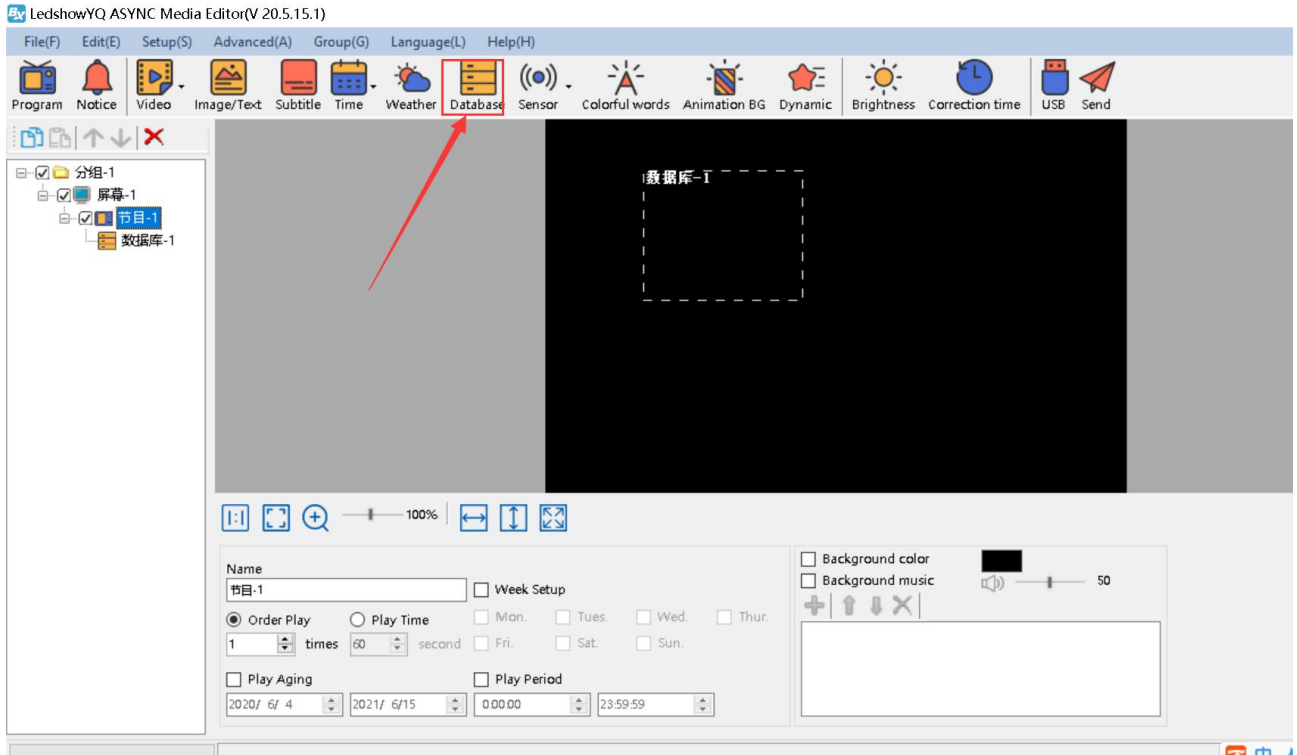
Add all screen

Add | Close


Add Database

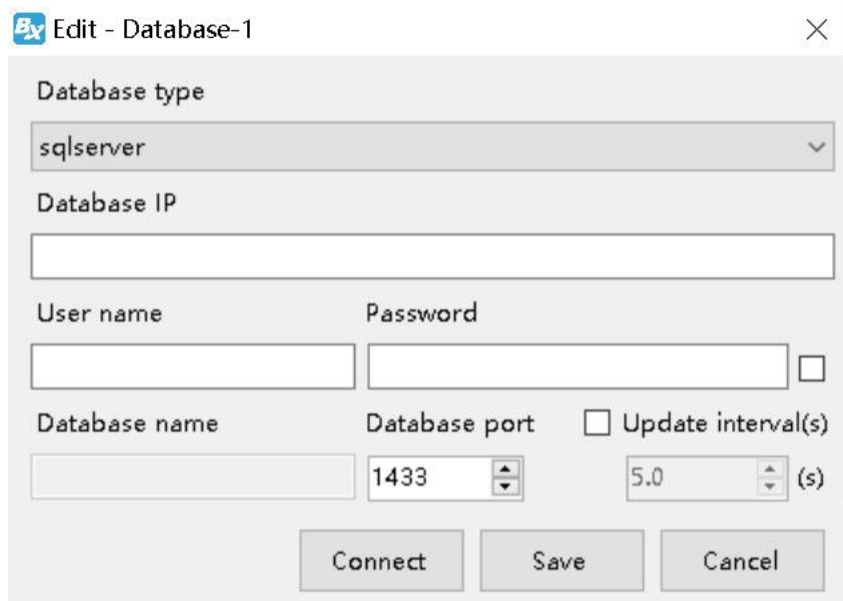



Click  as to add database area or click “add database zone” of “edit”:

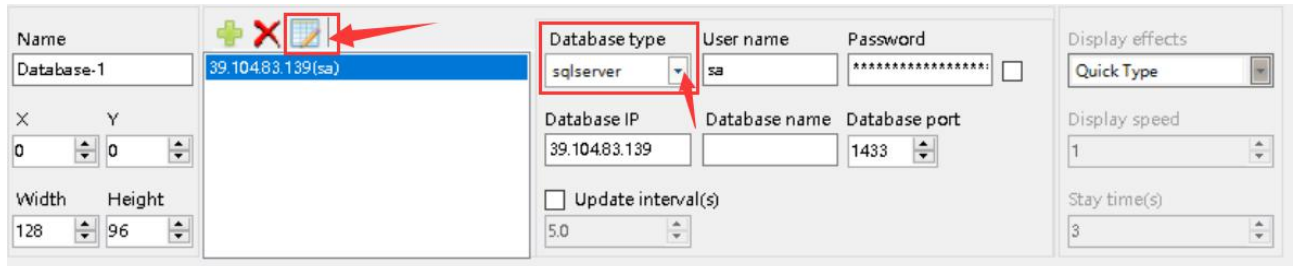


Database property

Click  icon -- select DB type, DB address, DB user name & passwords, DB port, Update intervals(s), etc. Then, click "Save" and "Connect" .

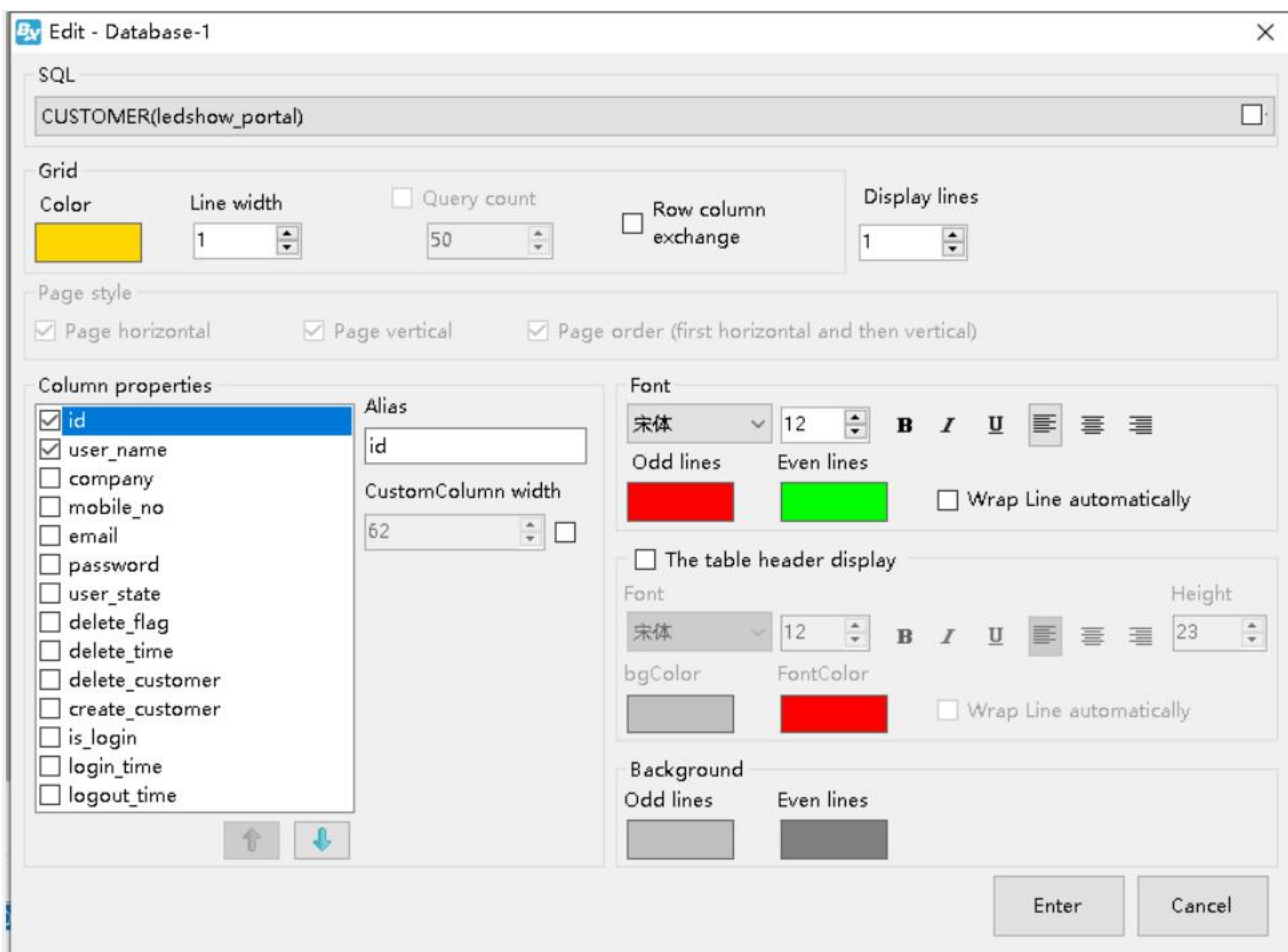


And users can input “database type”, database address, database user name, passwords, database name, database port, update interval(s) on database property directly. For example: connect with sqlserver dataset, firstly select “sqlserver” on “Database type”, and then input database address, user name, passwords, etc. After finish these settings, click , will connect with database.



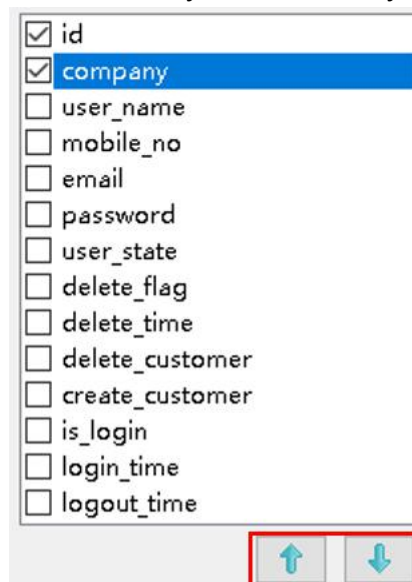
Setup Database property

When connect with database successfully, you can edit the parameters of database. Here, we connect one named which CUSTOMER (ledshow portal), as below:

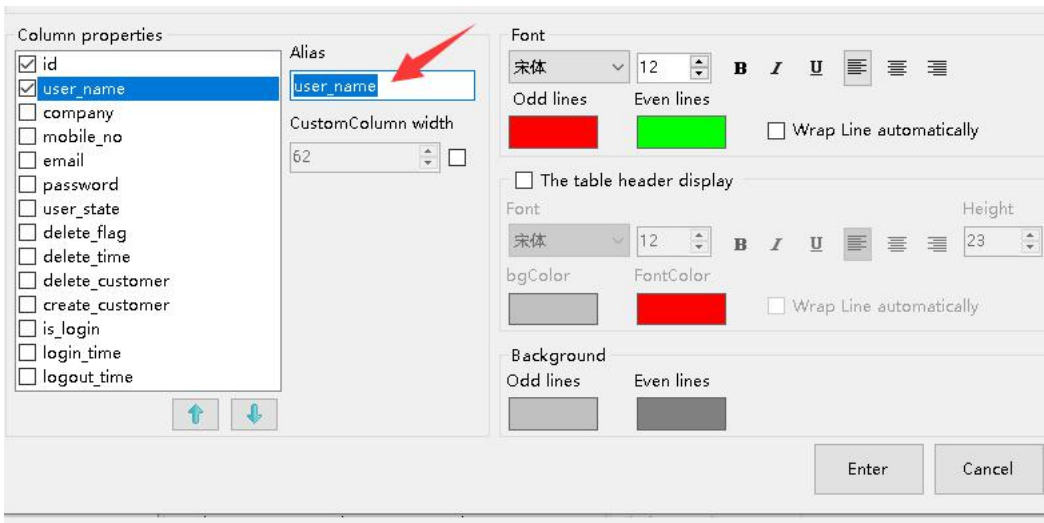


- SQL: Select ledshow portal in the list of SQL.
- Grid color: set frame color of database table.
- Line width of grid: set line width value.
- Row column exchange: if you check, the content of line and column will be exchanged.
- Display lines: set display lines of database table on screen.
- Column Property: Users can check "column property" , here we select the first two column name.
- Font: set font for column words.
- Font size: set font size for column words.
- Bold: set bold for column words.
- Italic: set italic for column words.
- Underline: set underline for column words.
- Left alignment/align center/Right alignment: Here is default.
- Column words color: set color for Odd lines and Even lines.
- Wrap line automatically: if you check "wrap line automatically" , the database table will wrap line automatically according to the table size and content.
- The table header display: if you check, the header will display too, and you can adjust the header font, font size, etc.
- Background color: users can set background color according to the odd lines and even lines of table.

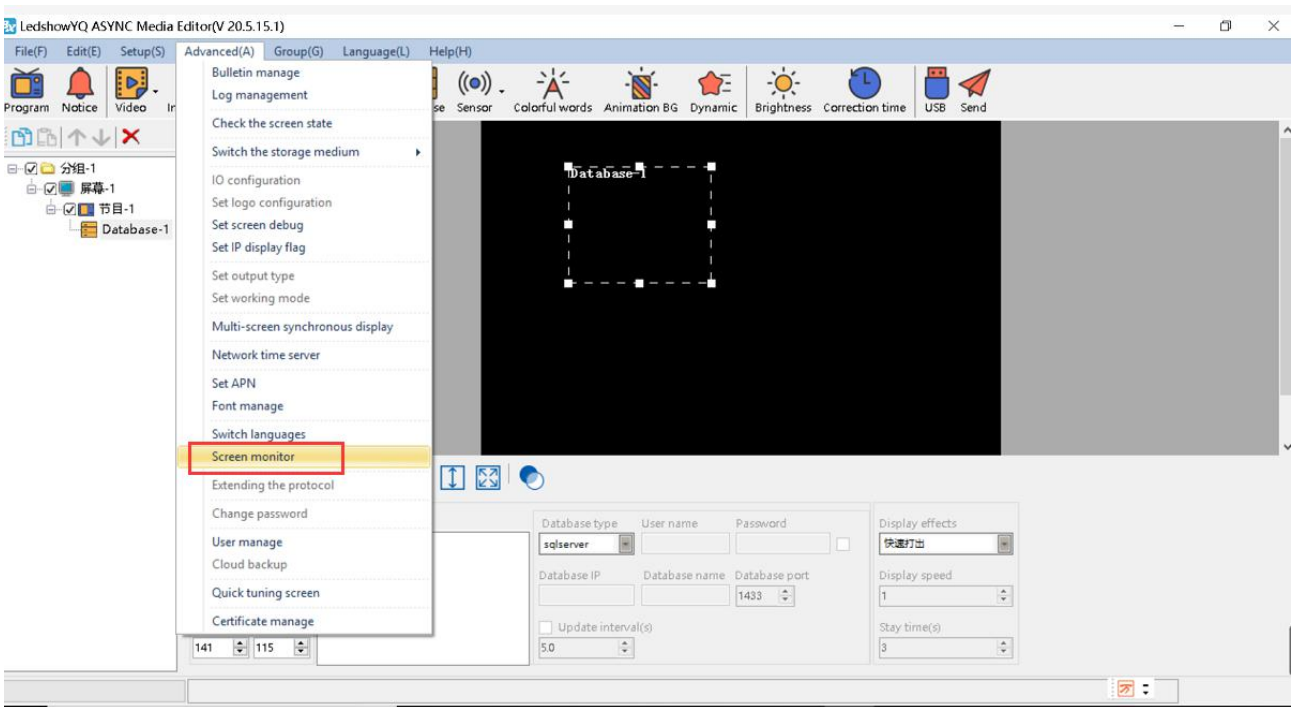
You can adjust display orders which you checked, by up or down arrow.

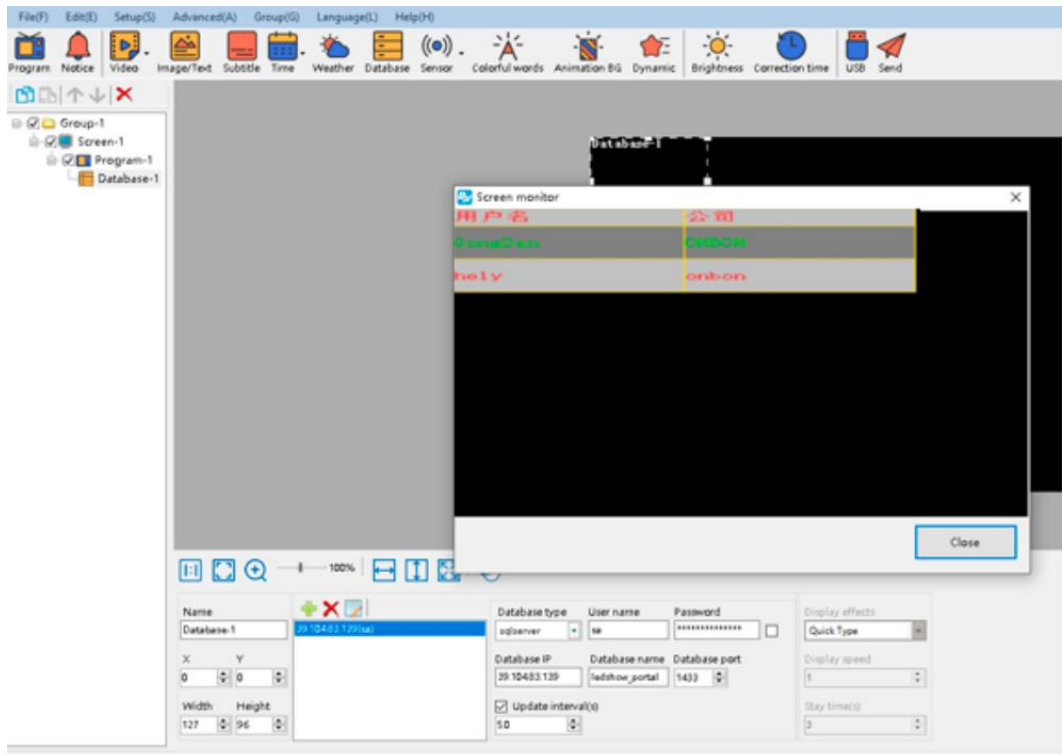


You can modify Alias' name too:



After finish the setting, back to main page of software, click "screen monitor" under "Advanced" , then, you can preview from software. Click "send" , it will be displayed on screen at the real time. As below:





	user_name	company	mobile_no
368	1199189189	南昌海神	13732957986
369	tzchending	CDtech.co	13958671810
370	libin7759	临沂办事处李彬	18669698859
371	wingshudi anzi	德州天星电子科	0534-3288608
372	sergei	555522qw	555522qw
373	NYPDZ	南阳市壹品电子	15537710111
374	danpusen	丹普森光电	15986769296
375	asbb	济南	
376	wfsflcpfxzx	潍坊市福利彩票	0536-2600209
377	wffczx	潍坊市福利彩票	0536-2600209
378	abba	内蒙	
379	000000	齐翼	15653603301
380	417730819	郑州办	13525519293
381	guzong123456	山西捷顺科贸有	7234691

Shanghai ONBON Technology Inc.

Address: 7 Floor, Tower 88, 1199#, North Qinzhou Road,
Xuhui District, Shanghai City, China

Website: www.onbonbx.com



ONBON Wechat number

ONBON (Jiangsu) Optoelectronic Industrial Co.,LTD

Address: 1299#, Fuchun Jiang Road, Kunshan City,
Jiangsu Province, China