

# OVP-Zn

## smart video wall controller

---

### Quick guide



## Description

OVP-Zn smart video wall controller is the latest ultra intelligent high-end video signal processing equipment. Modular design, support HDMI, DVI and other splicing board, plug and play. With both digital signal and analog signal, can realize the smooth high-definition display of 4K@60Hz and the following resolution video signals on different specifications of the screen; Using 4:4:4 color processing, can achieve rich colors, clear picture quality, real and delicate large screen display effect.

OVP-Zn controller can fully meet the command of dispatch center, conference report center, exhibition center, data operation and maintenance center, radio and television center and other UHD application scenes.

## 1 Features

- Support DVI, HDMI1.3, HDMI1.4, DP1.2 and other input signals
- Support DVI, HDMI2.0, HDMI1.4 and other output signals
- Support signal source pre-monitoring and large-screen screen echo
- Support any window opening, overlay, roaming, scaling support access to third-party central control devices
- Support irregular display splicing
- Support EDID settings of signal source input interfaces
- Support intelligent device self-test, which facilitates problem troubleshooting. Support signal source tailoring and local amplification
- Support device parameter backup
- Set brightness, information source switching, screen splicing, scene saving, scene calling, scene rotation, resolution setting through the splicer control software,
- Through the splicer control software, user can set up 4 groups of independent output screen, each group of large screen can be customized resolution

2 Application

2U case as an example

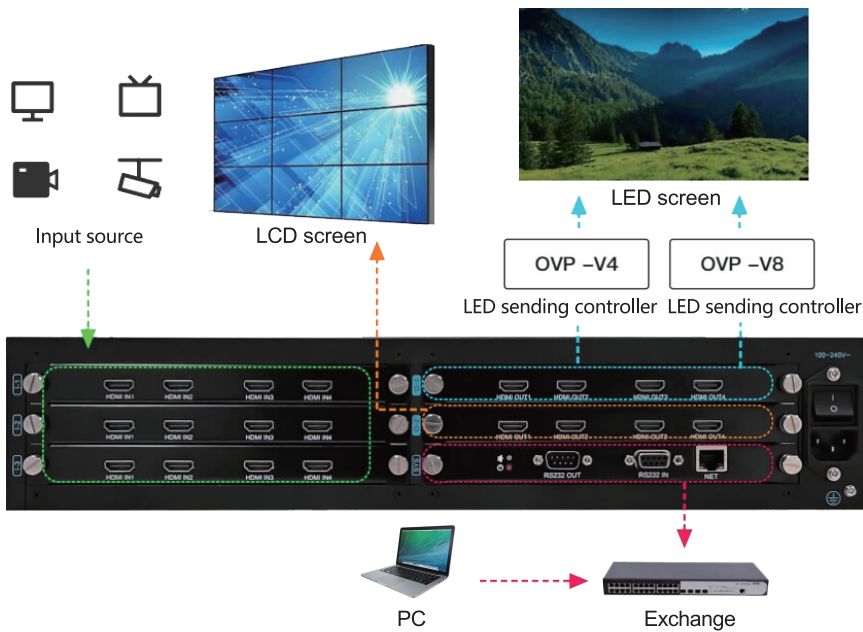
- ▶ Front panel



- ▶ Back panel



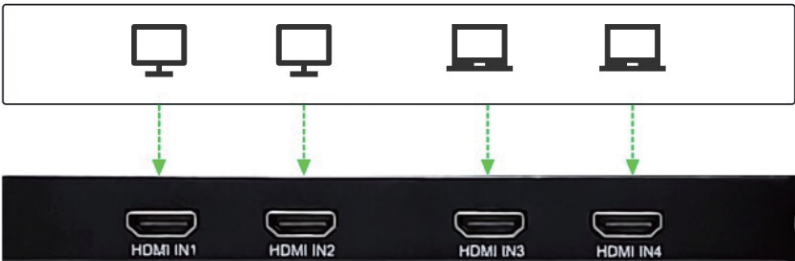
3 Connection diagram



## 4 User manual

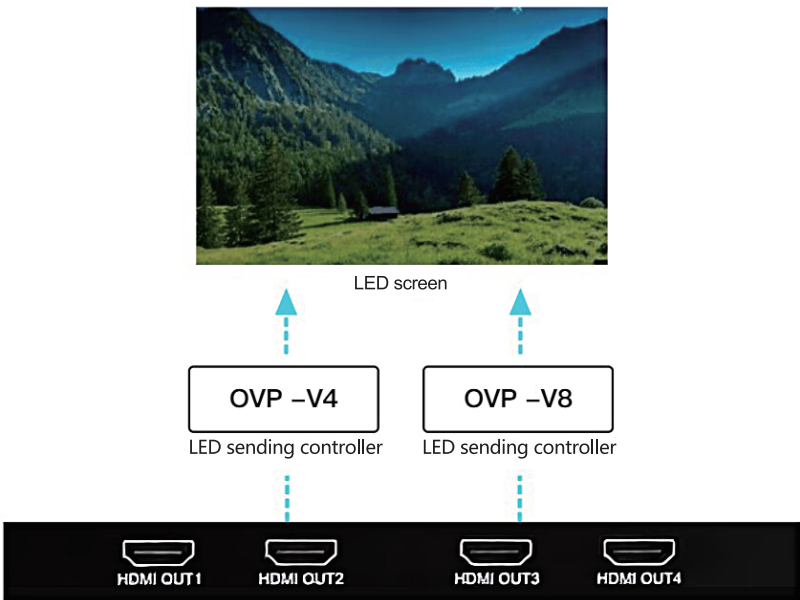
### 4.1 Connect the input source

The input signal source device is connected to the device input board interface.



### 4.2 Connect to the output source

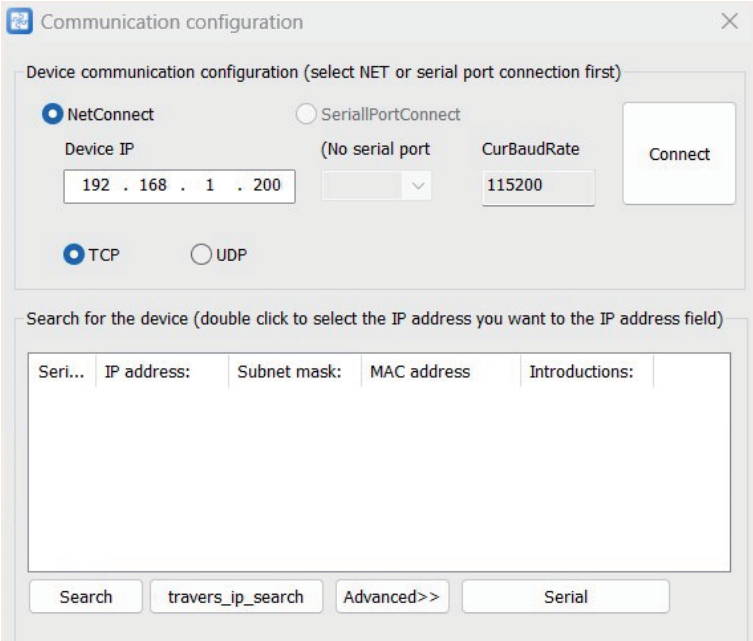
Connect the OVP-V4 (4 Gigabit network port) or OVP-V8 (8 Gigabit network port) LED transmit control device via HDMI.





## 4.3 Device communication connection

The computer is connected to the device through the LAN network port or serial port.



The image shows a "Communication configuration" dialog box. It has a title bar with a close button. The main area is divided into two sections. The top section is titled "Device communication configuration (select NET or serial port connection first)". It contains two radio buttons: "NetConnect" (selected) and "SerialPortConnect". Below "NetConnect" are three input fields: "Device IP" (containing "192 . 168 . 1 . 200"), "(No serial port)" (a dropdown menu), and "CurBaudRate" (containing "115200"). To the right of these fields is a "Connect" button. Below the top section are two more radio buttons: "TCP" (selected) and "UDP". The bottom section is titled "Search for the device (double click to select the IP address you want to the IP address field)". It contains a table with five columns: "Seri...", "IP address:", "Subnet mask:", "MAC address", and "Introductions:". Below the table are four buttons: "Search", "travers\_ip\_search", "Advanced>>", and "Serial".

Communication configuration

Device communication configuration (select NET or serial port connection first)

☒ NetConnect ☐ SerialPortConnect

Device IP (No serial port) CurBaudRate

192 . 168 . 1 . 200 115200

☒ TCP ☐ UDP

Connect

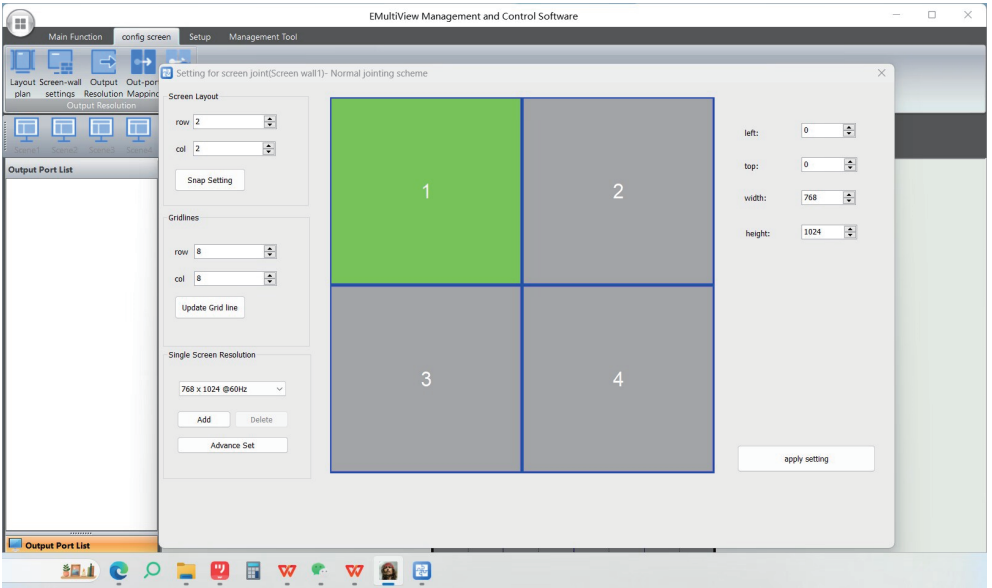
Search for the device (double click to select the IP address you want to the IP address field)

Seri...	IP address:	Subnet mask:	MAC address	Introductions:
---------	-------------	--------------	-------------	----------------

Search travers\_ip\_search Advanced>> Serial

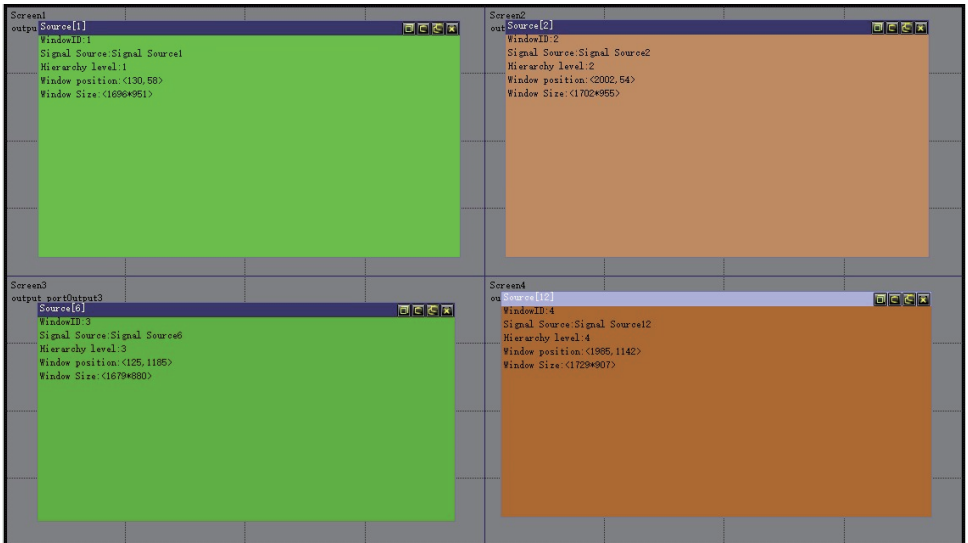
## 4.4 Setting for screen joints

Through "Z-builder Pro" software, in the "Config screen -> Setting for screen joints" interface, set the screen number, arrangement, resolution and others.



## 4.5 Open the window

After the screen joints is completed, the user selects the signal source according to the demand, long press the left mouse button to drag into the editing area, and you can open the window with the current signal source. Hold down the left mouse button and drag the layer to quickly adjust the position of the layer.



## 4.6 Set input and output resolution

Select “Input settings “or “Output settings “to enter the configuration screen, and select the corresponding port to modify.

Port config output

Port List

Seri...	Name	Resolution	Signal state	current rotation ...
<input type="checkbox"/>	1 Output1(!Port1)	1280 x 720 @60Hz		Not supported ro...
<input type="checkbox"/>	2 Output2(!Port2)	1280 x 800 @60Hz		Not supported ro...
<input type="checkbox"/>	3 Output3(!Port3)	1280 x 1024 @60Hz		Not supported ro...
<input type="checkbox"/>	4 Output4(!Port4)	1366 x 768 @60Hz		Not supported ro...
<input type="checkbox"/>	5 Output5(!Port5)	1440 x 900 @60Hz		Not supported ro...
<input type="checkbox"/>	6 Output6(!Port6)	1400 x 1050 @60Hz		Not supported ro...
<input type="checkbox"/>	7 Output7(!Port7)	1680 x 1050 @60Hz		Not supported ro...
<input type="checkbox"/>	8 Output8(!Port8)	1920 x 1080 @60Hz		Not supported ro...
<input type="checkbox"/>	9 Output9(!Port9)	1920 x 1200 @60Hz		Not supported ro...
<input type="checkbox"/>	10 Output10(!Port10)	1920 x 1080 @120Hz		Not supported ro...
<input type="checkbox"/>	11 Output11(!Port11)	3840 x 2160 @30Hz		Not supported ro...
<input type="checkbox"/>	12 Output12(!Port12)	1280 x 720 @60Hz		Not supported ro...
<input type="checkbox"/>	13 Output13(!Port13)	1280 x 800 @60Hz		Not supported ro...

Select all

Uncheck

Invert

Note: Check the channel to modify resolution. Green: Selected; Blue: Success; Red: Failure

screen resolution

1280 x 720 @60Hz

Read secondary resolution

Monitor Setup

Refresh Rate:

60

Hz

Display mode Settings

Add

Delete

Advanced timing

Recently setting resolution:

1920 x 1080 @60Hz

Reset channel

Reset All

Apply

Close

## FAQ

Fault phenomenon	Reason analysis	Methods
The power indicator is not on, and the operation is unresponsive	The power supply is not connected	Check if the power is on
	Poor power connection	Check the power cable is in good connection or not
No image output	The signal source is not on	Check if the signal source is on
	The signal source port is not in good contact	Check the signal source port is in good connection or not
The LAN port cannot be connected to the control computer	The control computer and the device are not on the same network segment	Modify the network segment of computer is the same with equipment, and IP should be not coincide
The output image is disturbed	The connection cable between the input and output devices is damaged	Replace the standard cable with a new one
	The connection line between the input and output devices is too long	Replace high-quality cables with a reasonable length

### Safety notice

This product has high pressure, non-professional maintenance personnel are not allowed to open the chassis or maintain the equipment by themselves, so as to avoid danger.

The input voltage range of AC power supply of this product is 100~240VAC 50/60Hz, please use the correct power supply.

This product is grounded through the power cable.To avoid current shocks, insert the power cable into a ground socket before connecting the input or output ports of the product.The protective grounding of the ground conductor in the power cable is essential for safe operation.

When you want to connect or unplug any signal or control cable, please turn off the LED video controller power first.

Please use in a clean, dry and ventilated environment. Do not put this product into a high temperature, humid environment.

This product is an electronic product. Please keep away from fire, water and inflammable and explosive dangerous goods.

If you find strange noise, smoke or odor and other abnormal conditions, should immediately unplug the power plug.