



Y series multiple screen display in real time function

Version: V1.1 Date: 2018.1.23

Directory

User guiding.....	3
Step 1 setup screen parameters and scan mode.....	3
After properly connecting the Y series controller, open the LedshowYQ 2018 software. Select "Settings" menu → "Set screen parameters", in the "Screen parameters settings" interface, click "Auto Search Add Mode" at the bottom left of the interface, as shown in Picture 1 below. Then enter the "Add Screen" interface, as shown in Picture2 below.....	3
第 2 步 选择同步的屏幕.....	5
Step 3 Create new program.....	9
Step 4 Share program.....	10
Step 5 Send program.....	13

User guiding

Y series controllers (cards) support multi-screen synchronization function. After simple settings, multiple screens can be synchronized to play the effect of displaying programs. The following will briefly introduce how the Y series controller can realize multi-screen synchronization function in LedshowYQ 2018 software.

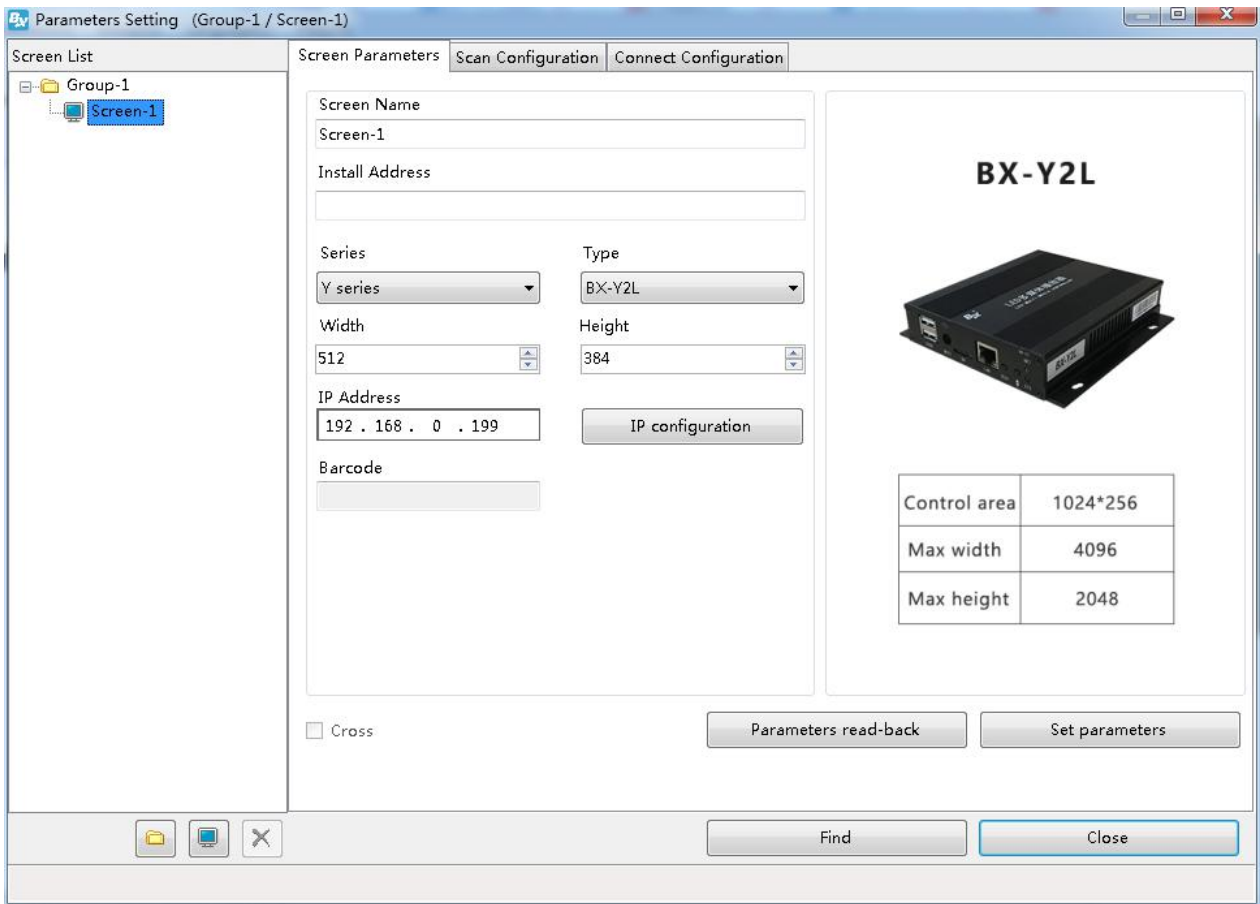
The controller needs to be able to access the public network to achieve multi-screen synchronization.

The multi-screen synchronization function only supports Y series controllers, and Y2, Y2L, Y3, Y04, and Y08 series controllers can all support multi-screen synchronization functions.

First connect the Y series controller to the 5V power supply and LED display correctly

Step 1 setup screen parameters and scan mode

After properly connecting the Y series controller, open the LedshowYQ 2018 software. Select "Settings" menu → "Set screen parameters", in the "Screen parameters settings" interface, click "Auto Search Add Mode" at the bottom left of the interface, as shown in Picture 1 below. Then enter the "Add Screen" interface, as shown in Picture2 below.



Picture 1



Picture 2

In the pop-up "Add Screen" interface, check "Add All Screens", and finally click "Add" to successfully bind the screen to the controller.

Then return to the "Screen Parameter Setting" interface, select "Scan Configuration", and set the width and height of the controller and the corresponding scanning method according to the size of the LED display.

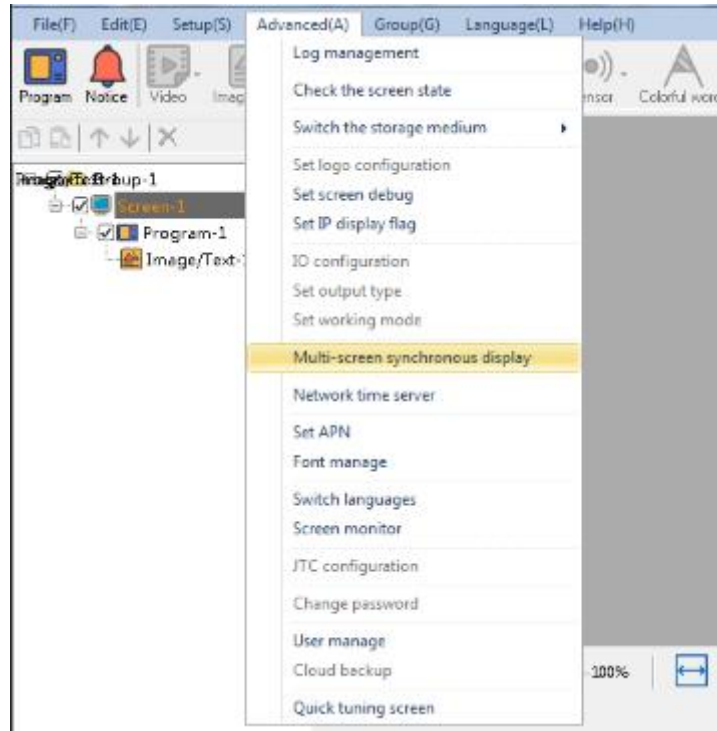
The user can follow the above steps to add multiple screens simultaneously.

Note: The scanning methods of all screen parameters such as the width and height of each screen must be the same.

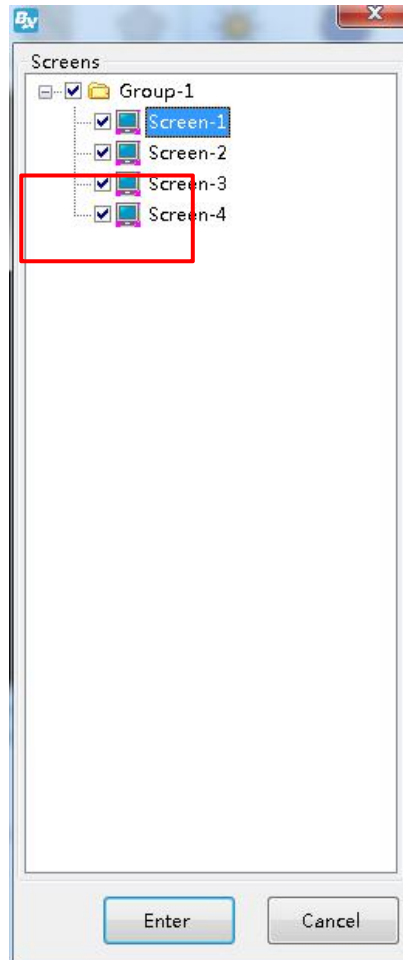
How to operate multi-screens synchronous function

第 2 步 选择同步的屏幕

Click the "Multi-screen Synchronous Display" option under the "Advanced" menu to enter the screen interface. The user can check the screens to be synchronized, such as: select "Screen-2" and "Screen-3", and finally click "OK", As shown in the Picture below:



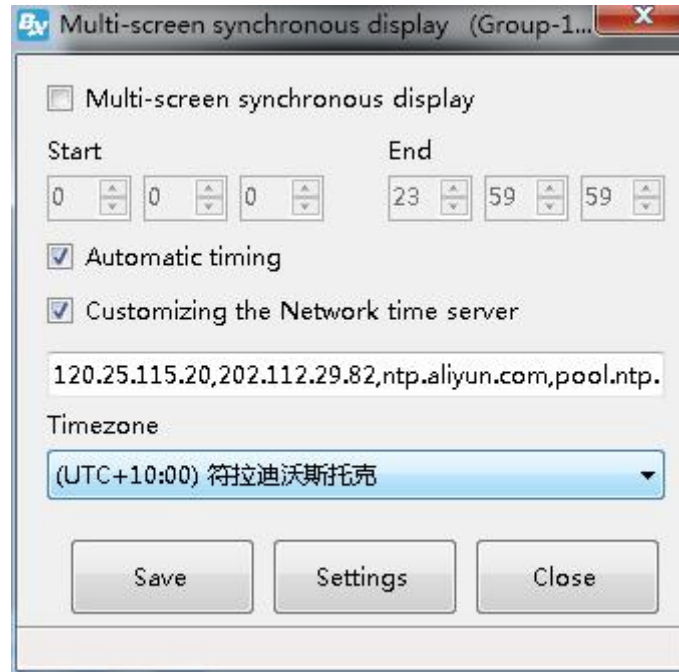
Picture 3



Picture 4

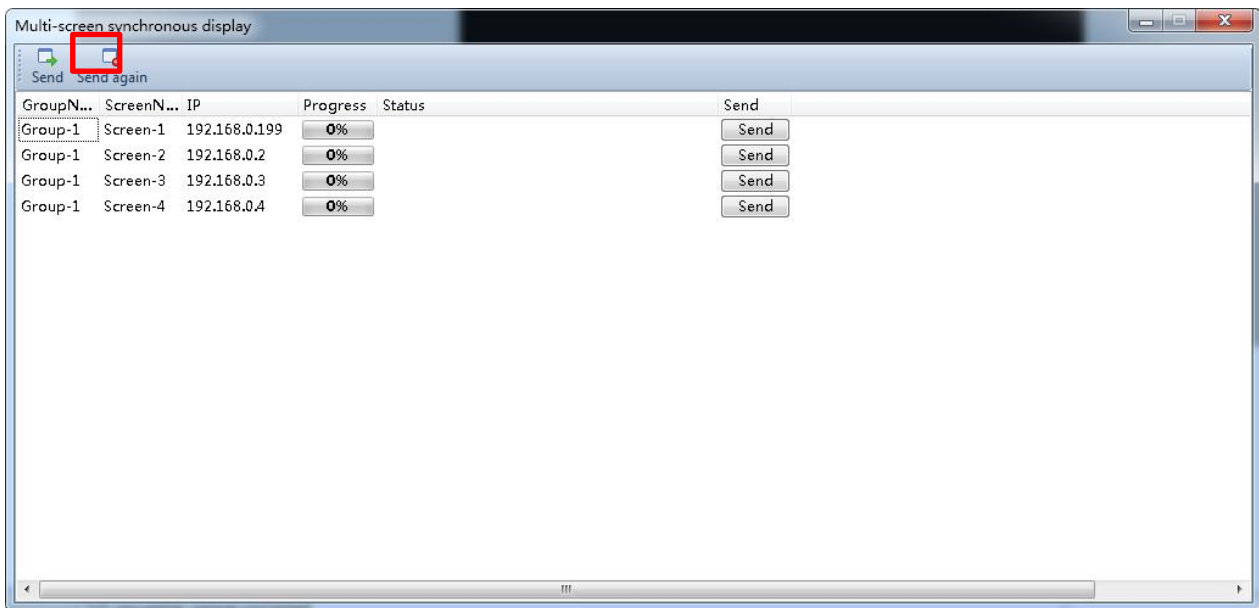
In the pop-up "Multi-screen synchronization display" box, first check "Multi-screen synchronization display", and then set the start time and end time of multi-screen synchronization under "Start" and "End". After setting, click "Save", and finally click "Set", as shown in the Picture below:

Note: The start time of the multi-screen synchronization function must be in the future (for example: the current time is 10 o'clock, it can only be after 10 o'clock, and 9 o'clock cannot be set as the start time), and the end time cannot be set across days.



Picture 5

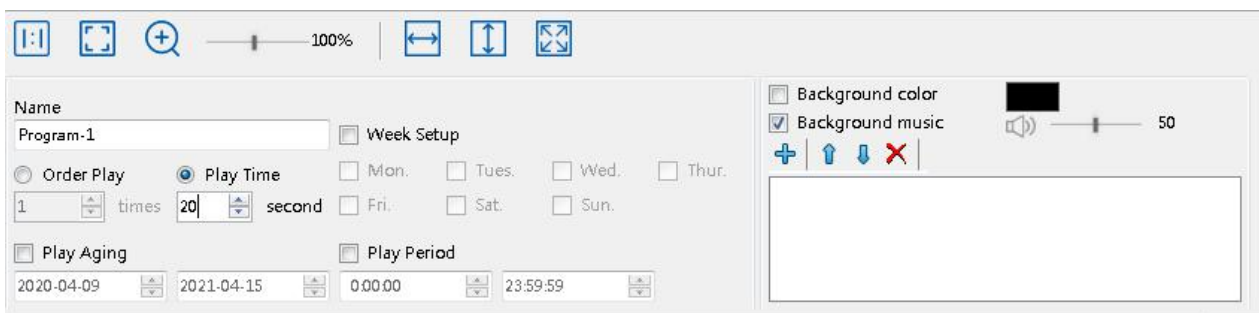
After setting the start and end time of multi-screen synchronization, the following interface will pop up, click "Send", when the "progress" is displayed as "100%", the multi-screen synchronization command is completed.



Picture 6

Step 3 Create new program

Create a new program under the screen, and add specific content to be played under the program, such as: Picture, text, subtitles, or weather. Then, in the program properties bar at the bottom of the interface, set the play time of the program under "Play Time", as shown in the following Picture: (If the play time is set longer, the synchronization effect is not as good as the short play time. It is recommended to set the play time. Is shorter.)

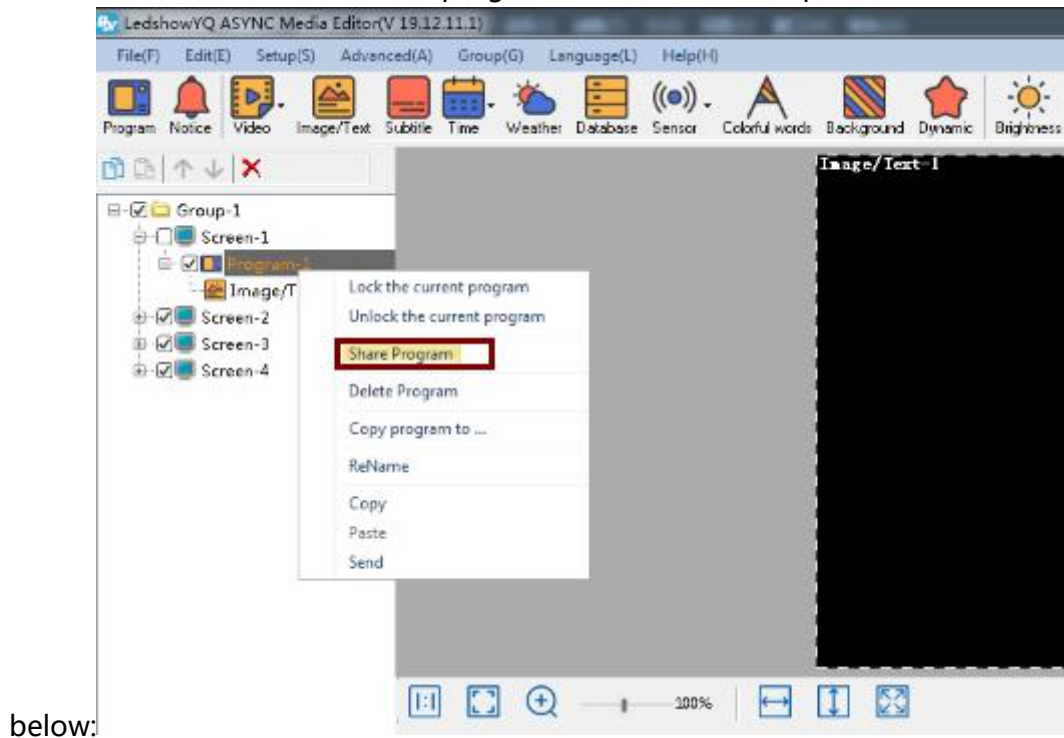


Picture 7

Step 4 Share program

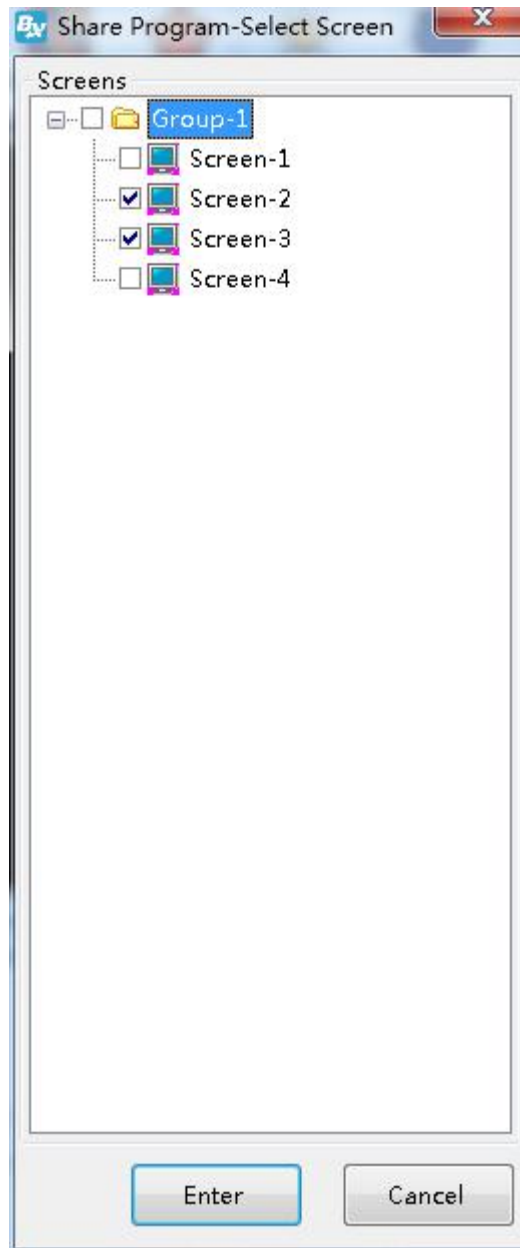
Two shared programs are built under one screen, and the multi-screen synchronization effect is better.

In the main interface of the software, in the program list, select a program to be shared, for example ; select "program 1" under screen 1 as shared program 1, click the right mouse button and select "shared program", as shown in the picture



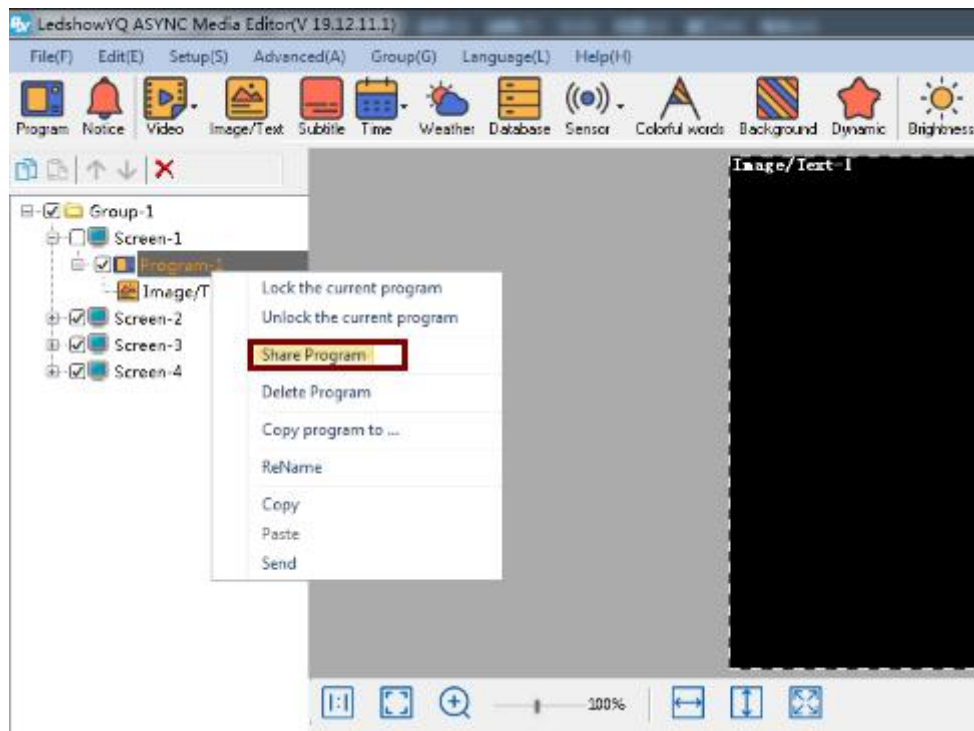
Picture8

In the pop-up "Shared Program" selection display interface, you can see the list of multi-screen synchronization displays that the user has selected. Click "OK" to complete the configuration of the multi-screen synchronization function, as shown in the following Picture:



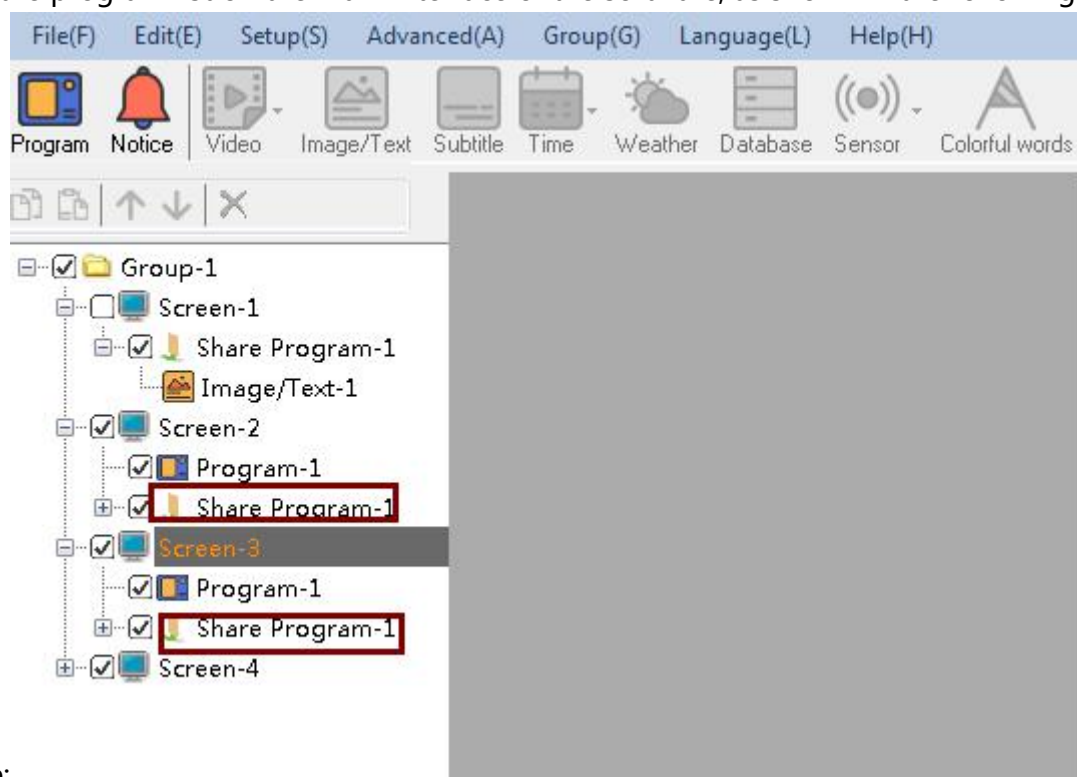
Picture9

Select another program to be shared, such as ;, select "program 2" under screen 1 as shared program 2, click the right mouse button and select "shared program", as shown in the picture below:



Picture10

After setting the shared program, you can see "Shared Program 1" and "Shared Program 2" under the program list on the main interface of the software, as shown in the following

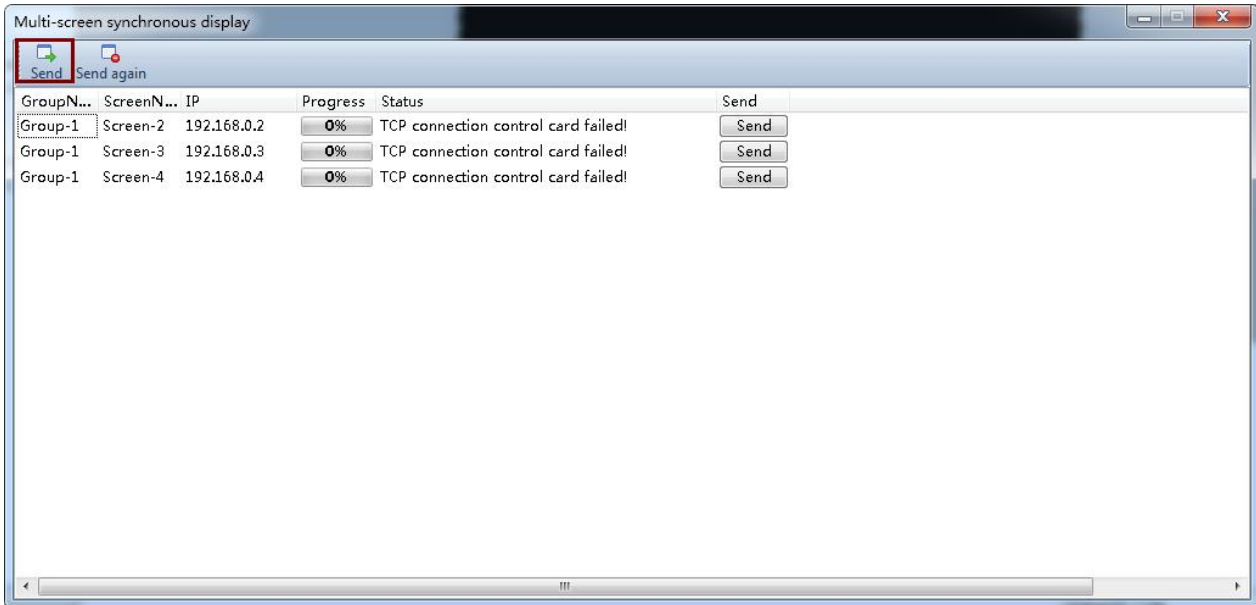


Picture:

Picture11

Step 5 Send program

Click the "Send Program" option under the "Group" menu to enter the group send program interface, click "OK", as shown in the Picture below:



Picture13

Finally, at the start time set by the user, multiple display screens will start sending programs synchronously, and stop sending programs synchronously at the end time.