



iLEDCloud Multimedia Information Releasing Platform Quick Guide——version 2019.05.23


iLEDCloud Multimedia Information Releasing Platform is high efficient, convenient and user friendly. It contains excellent program editing function that can **manage and share all your programs from anywhere.**

Follow the **six steps** below, then you can release your programs:

1. Installing supporting PC software

Please go to Onbon' s official website:<http://www.onbonbx.com/>. Click " Download " , and download the corresponding multimedia editor according to your controller card version. If you use YQ controller card, download the newest LedshowYQ software(Version after 18.9.29.1). If you use 6 series controller cards, download the newest LedshowTW software(Version after 18.10.19.0). Install in your PC.

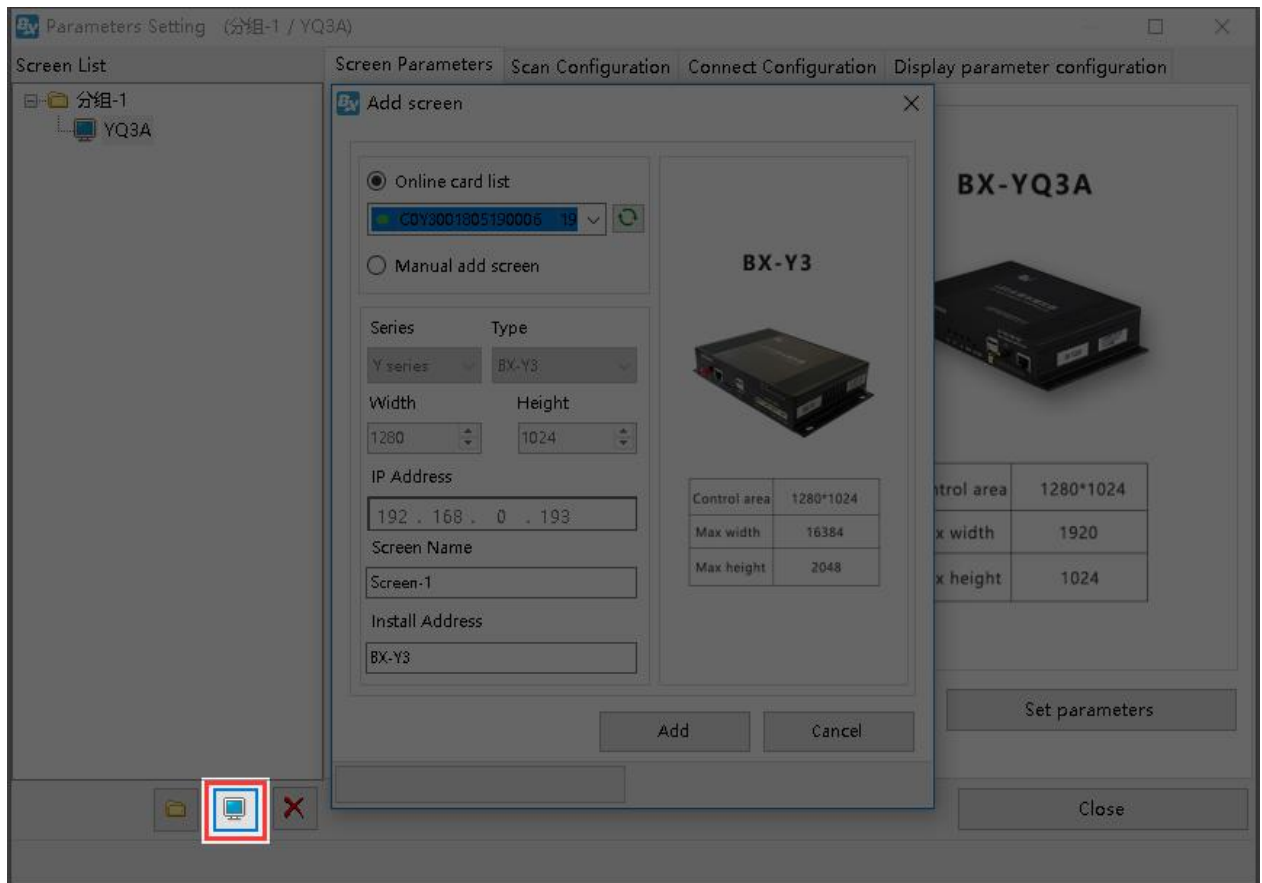
Download > PC Software BX-YQ series full color software			
Title	Instruction	Number	Download
Ledshow YQ mobile software for Android V1.2.2	Ledshow YQ mobile software for Android	682	
LedshowYQ2016 V17.4.19.1	LedshowYQ2016 Software(V16.11.01 Above version)Support setting the screen parameter and scan configuration of new generation of high refresh frame screen.Support intelligent scanning.Added automatic correction time from internet function.Many details have been optimised	1908	

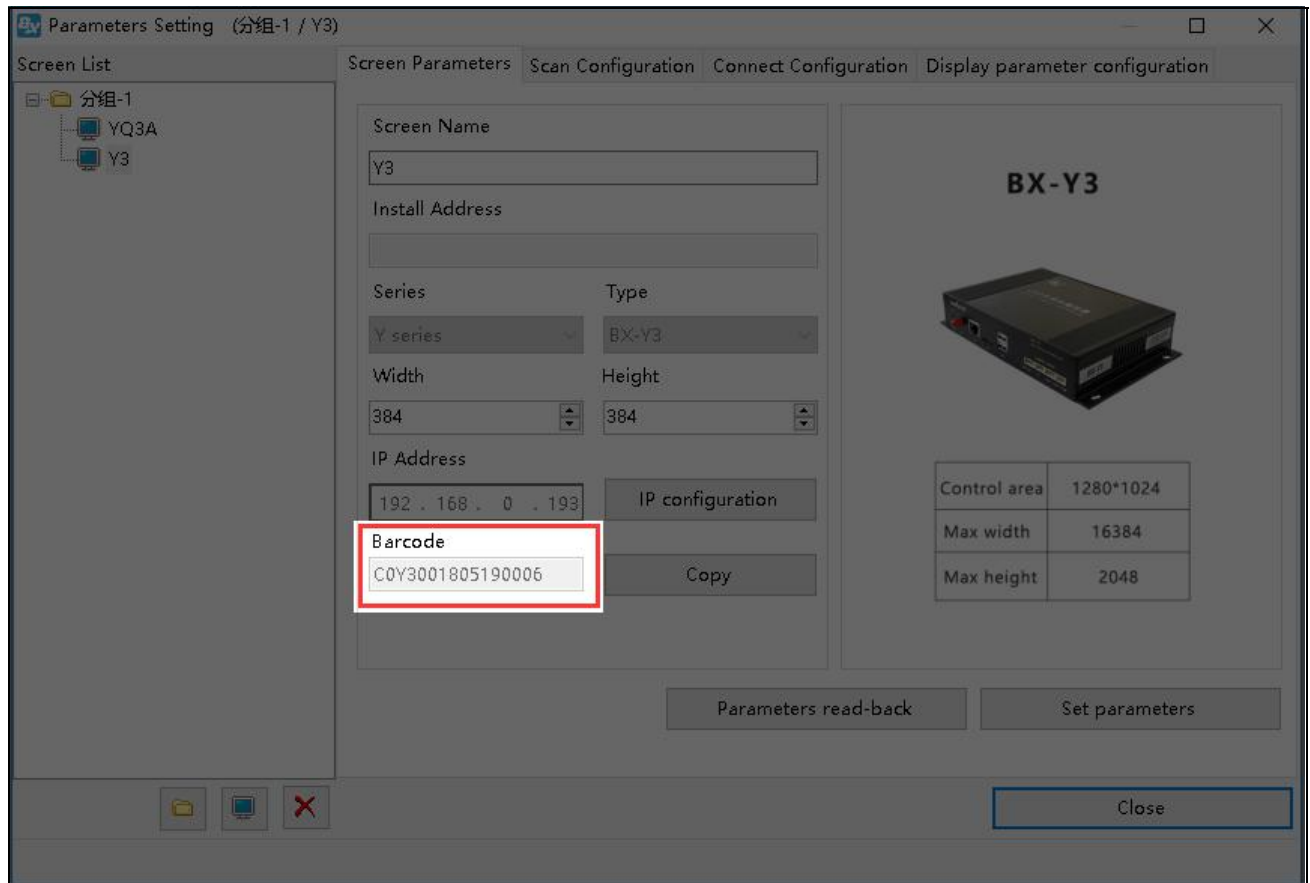
Download > PC Software Single & dual color software			
Title	Instruction	Number	Download
LedshowTW 2017 V17.04.07.00	Match with BX-5&6/DX series controller,the latest update functions: BX-WIFI setting	3069	

2. Configuring IP of the multimedia device and server properties.

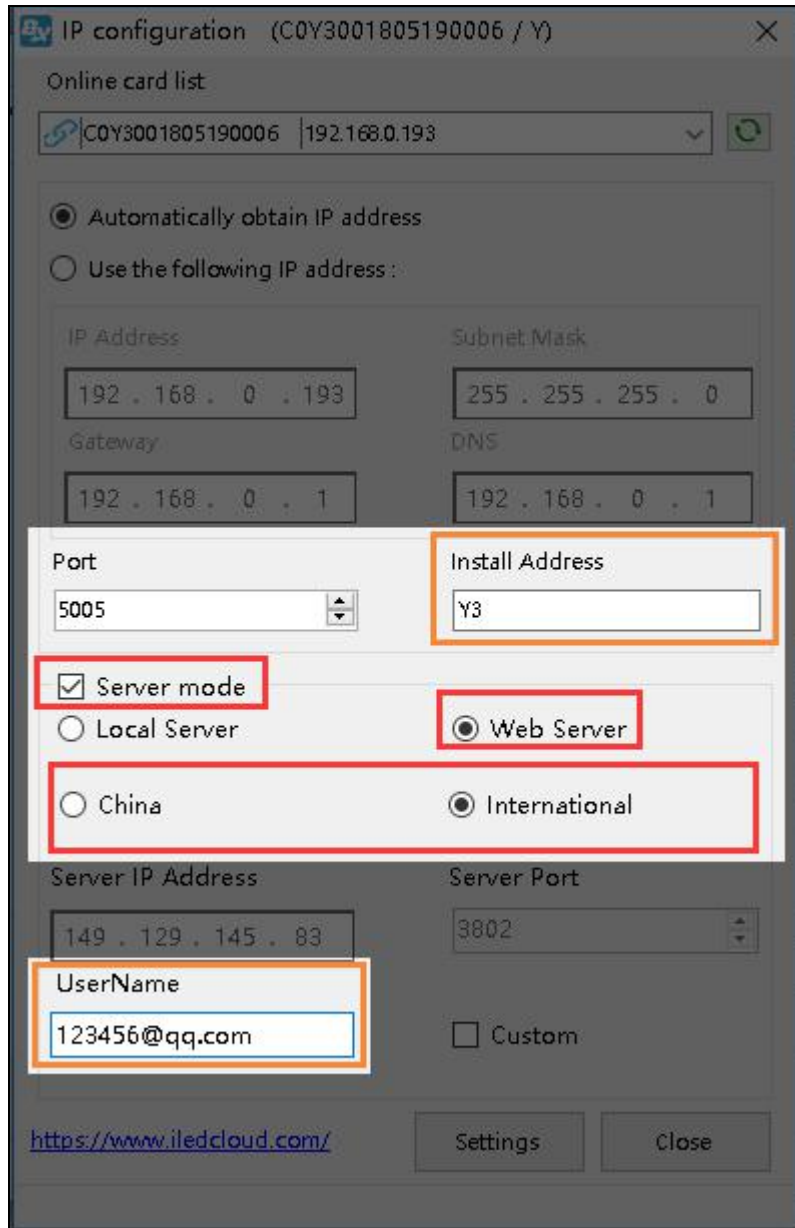
- YQ controller card

Connect YQ controller card to the power and cable. Keep the PC that installed LedshowYQ2016 and your controller card in the same network and segment. Open LedshowYQ2016, click "Add screen" button and select "Online controller list" at "Parameter settings" (Settings-Parameter settings), and then click "Add" to finish adding the screen. After adding the screen, you can configure the related parameters of your controller card and get bar codes of your controller cards. (Setup-Set Screen Parameters) You can find the bar code from either "Set Screen Parameters" or from the controller card. You can find the bar code from either "Set Screen Parameters" or from the controller card.



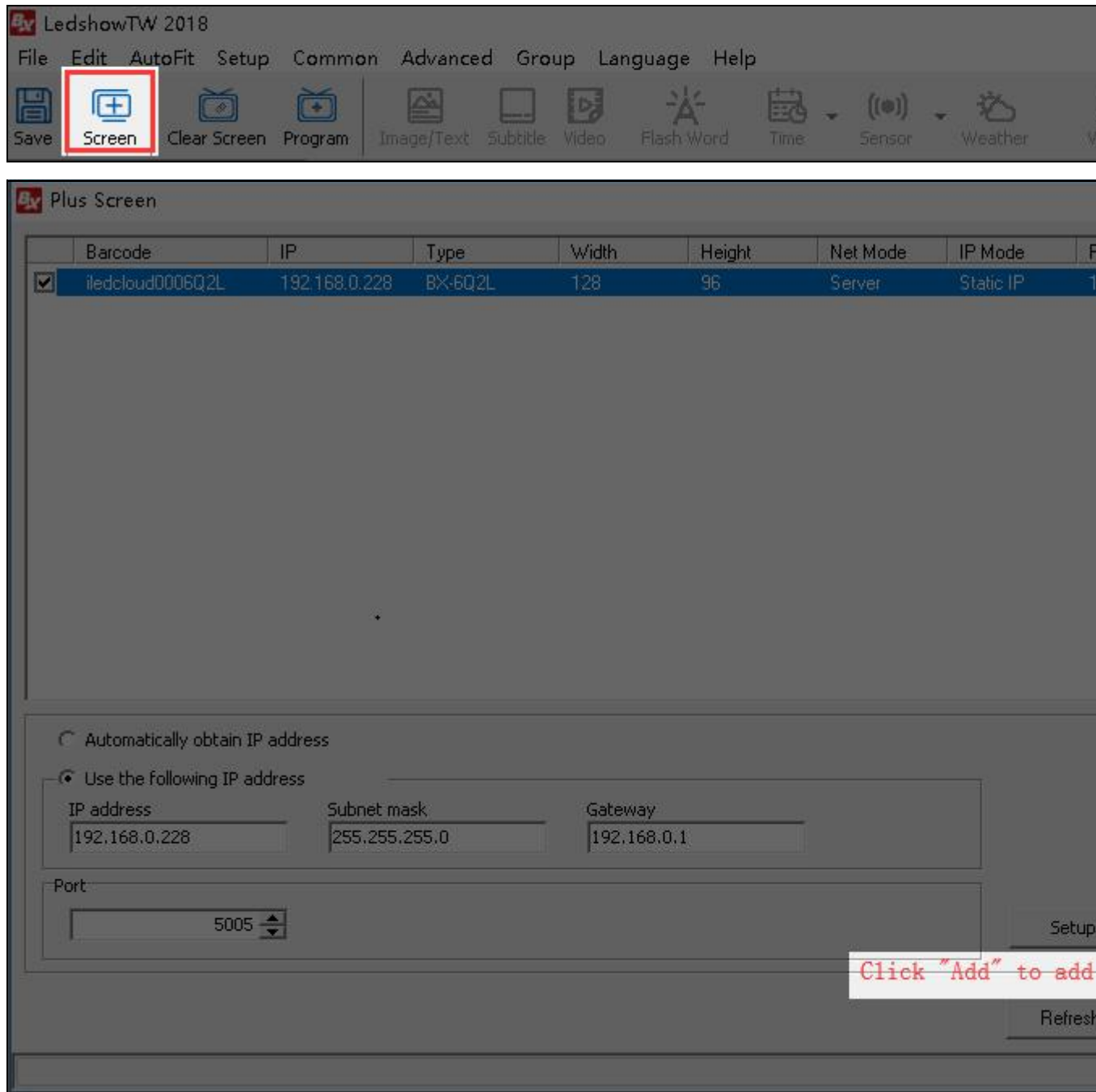


You need to edit controller card' s IP (recommend to use "Automatically obtain IP address") in "Controller IP Configuration" . (Setup-Controller IP Configuration). Tick "Server Configuration" option, and then choose " Web Server " (Users in China please select " China site " and international users please select "International site"). Once connect to the internet, you can manipulate your controller card via our platform. If you enter "Username" (email or phone when you register for our platform) and " Name " (screen name for distinguish) when you configure the IP, when the controller card connects to internet, it will be automatically added under the corresponding user' s account, and no need to be manually added. (**Remark: Only one device can be connected in your local area network when you configure IP.**)



- **6 Series Controller card**

Connect 6 Series controller card to the power and cable. Keep the PC that installed LedshowTW and your controller card in the same network and segment. Open LedshowTW, click "Screen", and keep your controller card in the same network with your PC. Then select the screen and click "Add" to finish adding screen. Click "Set Screen Parameters" from "Setup", and then you can set the related parameters. Change the "Communication Mode" to "WEB Server".



Click "Web Configuration" . In the IP configuration interface, enter controller IP. International users please select "International site" .Then click "Setup" button. If you enter your username(email or phone number when you register) and screen name (customized by you), when your card connects to the internet, they will be added automatically to the corresponding account. **(Remark: Only one device can be connected in your local area network when you configure IP.)**

6Q2L---Single IP configuration

Use the following IP address

IP address: 192.168.0.3 Subnet mask: 255.255.255.0

Gateway: 192.168.0.1

Port: 5005

Server configuration

Server mode
 ONBON server-3G
 WEB-server

China
 International

Server IP address: 149.129.145.83 Server port: 3801

Server access password(8 bytes): Heartbeat interval: 20 s

Controller network ID.(12 bytes):

User Name: 123456@qq.com Install Address: 6Q2L

Make sure only one controller is in the LAN when set ip, Otherwise, it will set all of the LAN controllers as the current IP address.

<https://www.iledcloud.com/> Setup

6 Series controller card bar code can be found from following image:

3 . Logging in your account

International users please go to www.iledcloud.com and click " Login " to enter iLEDCloud Multimedia Information Releasing Platform.

- If you haven' t registered, click "register" at the right bottom to register.

- **Enterprise User:** You have to provide your Organization code and email/phone number when registration. After verifying your email/phone number, please contact customer service to apply for reviewing. If approved, you can then login with your email/phone number.

- **Personal User:** You only need either email or phone number for registration. If you register with your phone number, you can login after the phone number is verified; if you register with your email, you have to contact customer service after verifying the email to finish the registration process.

The screenshot shows a registration page titled "Welcome to register" with a logo on the left and navigation links for "中文 | English" and "Already have account, Login" on the right. The page is divided into two tabs: "Individual" and "Enterprise", with "Enterprise" selected. The form includes fields for "Enterprise Name", "Code Type" (set to "Organization"), "Name", "Password", "Confirm Password", and "Verification Code". Below these are buttons for "Phone verification" and "Email verification". The "Phone number" field is set to "china+86" and includes a "Send verification code" button. At the bottom, there is a checkbox for "I have read and accept User protocol" and a "Register Now" button.

- If you have registered, enter the email/phone number, password and verification code to login.

4.Adding screen

After logging in, click "Add screen" in "Screen Management". Enter "Serial Number" and "Name" in the pop up window to finish adding screens. Notice that you can only add screens when controller cards are online.

1. Click Screen

2. Click "Add"

Home > Resource > Screen

Range All(Default)

Device code

Online

Check online Reset

Name

Group:[None] (5)

YQ5E

6Q2L

Y3-123

YQ3AE-111

BX-YQ4

+

Add screen

Device code 50004457CB4A000000310000000 *

Screen Name YQ1-75

3. Enter serial number and name of the device.
You can customize the name in order to distinguish with each other.

Add

If you enter "Username" and "Name" when you configure the IP, it will be automatically added under the corresponding user's account, otherwise it needs to be manually added. We recommend you to use bar code as serial number. Use identification code when no bar code found in your controller card.

After adding screens, you can check screen information in "Screen Management" page.

Name	Width	Height	Department	Location	Device code	Model	Online	On/off time	Offlinetime	Comment	Playing	Operation
Group:None(5)												
YQ3AE	384	384	计费功能企业账户	江苏省苏州	COYQ311706030001	BX-YQ3AE		2019/05/08 12:20:59			2 Programs	Renew
YQ2E	384	384	计费功能企业账户	上海市上海	COYQ2E1606130023	BX-YQ2E		2018/05/23 16:11:50	349:21:9:13		0 Programs	Renew

5.Purchase Packages

In order to use all the functions at iLEDCloud, you need to purchase packages for your screens. You can select screens to order packages at

"Screen Management" .

Payment ✕

1 2 3

Confirm the purchase
Payment
Payment success

You have selected the following screens to renew or purchase their plans:

Name	Comment	Department	Current package	Package type	Number	Expected end date	Coupon	Operation
YQ5E		苏州云屏网络科技有限公司	Regular plan:	Regular	1	2020/11/22	None	Delete

There are currently 1 screens to buy and renew. [Click here to add](#)

You have chosen:

Regular plan 1 price 12 USD/package

Premium plan 0 price 18 USD/package

Total : **12** USD

← Previous step
Next step →

Payment

Confirm the purchase 2 Payment 3 Payment success

✓ **Your order was submitted successful. Please pay as soon as possible!** payee: Suzhou Yunpin Network Technology Co.,LTD
total amount: 12USD

Order content	Order number	Trade number	Transaction amount / USD
Regular plan1,Premium plan0	19050903181000090275	19050903181000090293	12

Please read Suzhou Yunpin Network Technology Co.,LTD Payment Agreement

Pay by PayPal

I have read Suzhou Yunpin Network Technology Co.,LTD Payment Agreement

←Previous step Next step→

Payment

Confirm the purchase ✓ Payment ✓ 3 Payment success

Payment success

←Previous step 完成→

6.Editing programs.

Click “Program management” in “Program” to create program guide. You need select controller card manufacturer, product series, program types, palette sizes and other parameters and click “Finish” , you finish creating new programs.

Create New Program
✕

Manufactory:

Product:

Multimedia
Text only

Type content

	Size	Models	Screen list	Match Rate②
<input type="checkbox"/>	➕ 312x416	(Total 1)	(Total 1)	82%
<input type="checkbox"/>	➕ 128x96	(Total 2)	(Total 5)	0%
<input checked="" type="checkbox"/>	➕ 384x384	(Total 9)	(Total 17)	100%
<input type="checkbox"/>	➕ 320x192	(Total 1)	(Total 1)	0%

Open Program

Create→

Then, you can double click to add zones. Image, videos and text files can also be added by double clicking or dragging in. "Playlist" and "content" locate at the left side of the page, which contain the program that you are editing and other programs in this list and the content dendrogram of the program. The blank space locates at the upper middle is the screen you edit, and right side below is "Zone", "Material" and "Property" that you may use for programs. On the right of the page are content dendrogram and screen property.



Image-text



Subtitle



Video



Date



Clock



Sensor



Timer



Weather



Text

1. Double click or drag in zones you need.

Content Playlist

Rich text1

inform(25# 384x384) ←Program name

Rich-text image1 ←Zones created

logo.png ←Materials added to zones

Rich text1 ←Materials added to zones

Take the text material in Rich Image-Text Zone as an example.

Properties Material

Rich text1

Basic property

Name Rich text1

Time You can set the time(second) that the text material stops

Stay time 5

Text

Material

Background You can set background color or image for text

Background color rgb(0, 0, 0)

Background image

Show Effect You can set display effect and display speed for text

Display effect name Random display

Display speed 1(Fastest)

Pixel speed 1

Content Playlist

Rich text1

inform(25# 384x384) ←Program name

Rich-text image1 ←Zones created

logo.png ←Materials added to zones

Rich text1 ←Materials added to zones

Take the image material in Rich Image-Text Zone as an example.

Properties Material

logo.png

Basic property

Name logo.png

Time You can set the time(second) that the image material stops

Stay time 5

Material You can set content and zoom mode for image

Image logo.png

Zoom mode Windows scale

Background

Background color rgb(0, 0, 0)

Background image

Show Effect You can set display effect and display speed for image

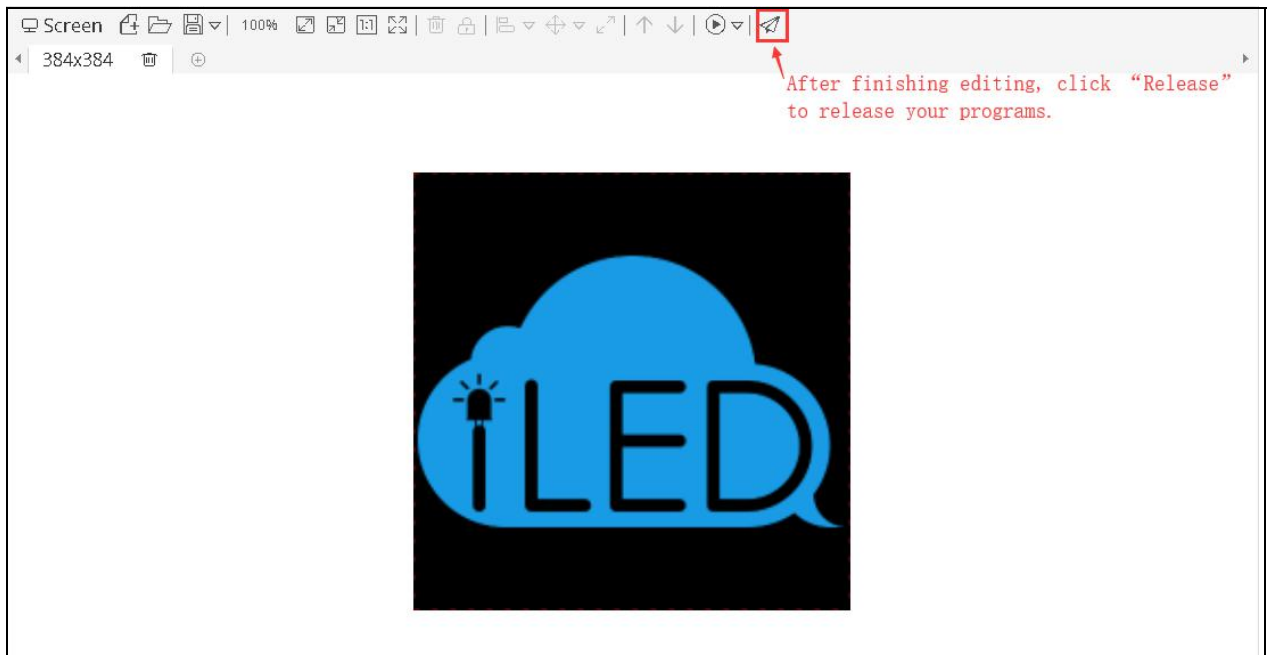
Display effect name Random display

Display speed 1(Fastest)

Pixel speed 1

7.Releasing programs

After finishing editing programs, click "Release" button and then you will see Program Releasing Guide which helps new user to learn how to release programs.



Sent list: Single program list -- inform[1 programs]

Usable Name Location Comment

<input type="checkbox"/>	ID	Name	Width	Height	Location	Status	Comment
<input type="checkbox"/>	Group: (6) <i>Select screens</i>						
<input checked="" type="checkbox"/>	585	YQ2A-1	384	384	苏州市	Online; 384x384:100%	
<input type="checkbox"/>	437	YQ3AE	384	384	江苏省苏州市姑苏	Offline; 384x384:100%	
<input type="checkbox"/>	573	YQ2	384	384		Offline; 384x384:100%	
<input type="checkbox"/>	584	YQ5E	384	384		Offline; 384x384:100%	
<input type="checkbox"/>	592	YQ5E-借用	384	384		Offline; 384x384:100%	
<input type="checkbox"/>	593	YQ2A-1	432	270		Offline; 384x384:70%	
<input type="checkbox"/>	Group:YQ系列 (2)						
<input type="checkbox"/>	325	YQ3	384	384	江苏省苏州市江苏	Offline; 384x384:100%	
<input type="checkbox"/>	589	YQ2-旧	384	384		Offline; 384x384:100%	
<input type="checkbox"/>	Group:姑苏区 (1)						

Multi pages selection. Selected: 1

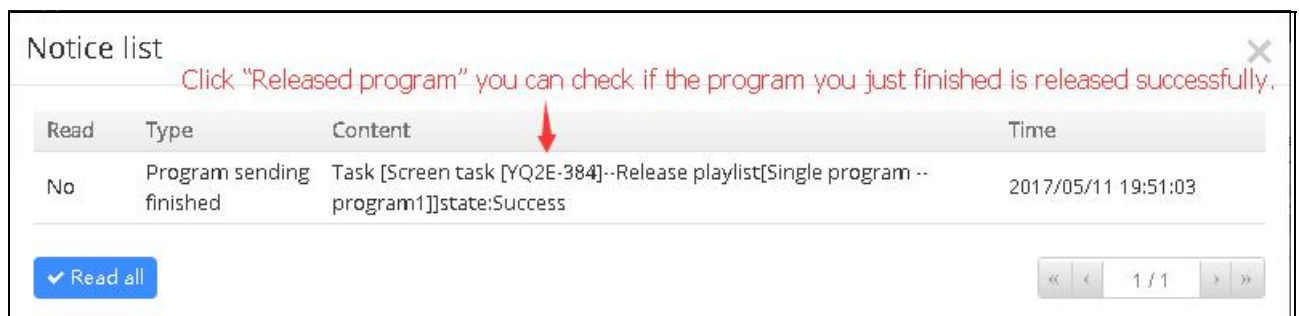
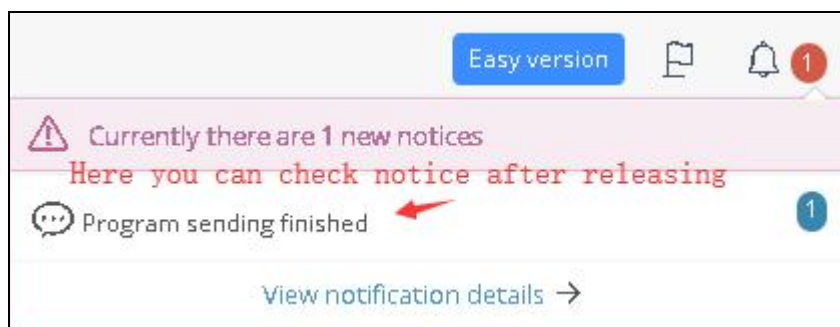
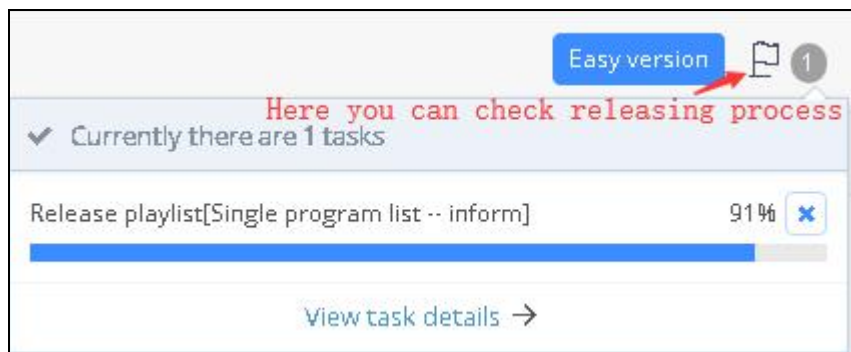
Advanced options

Page 1 of 1 | 10

View 1 - 9 of 9

← Previous step Release →

When you finish steps in Program Releasing Guide, you can check program releasing process and status information from the "Notice" icon at the top right of the webpage.



Once you successfully release your programs and connect your device and screen with cable, you can instantly watch the programs you edited.