



TEMP&HUMIDITY SENSOR SPECIFICATIONS

Version: V1.0 Date: 2019.5.23

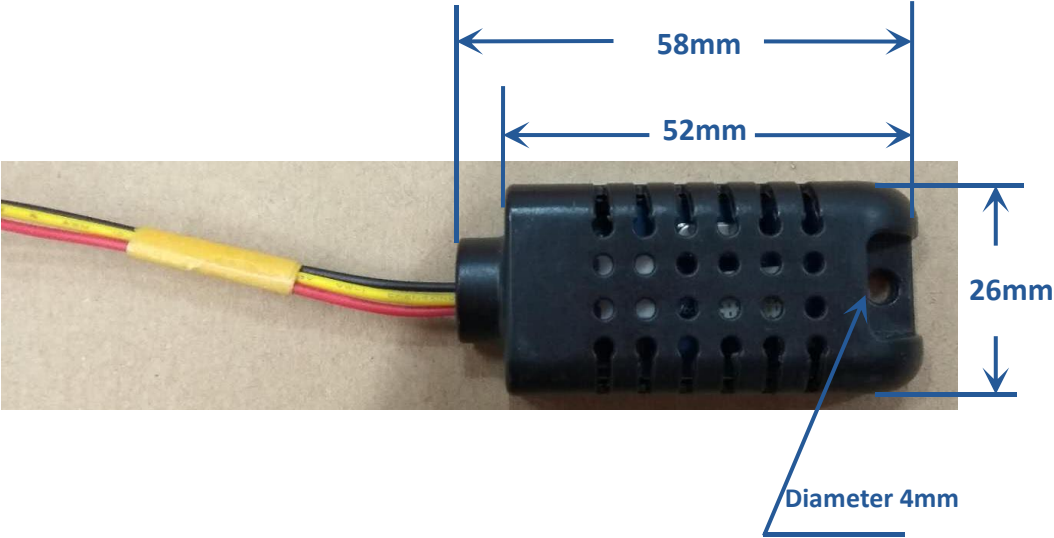
DERECTORY

FEATURES.....	2
DEMENSION.....	3
Connection definition.....	4
CONNECTION.....	5
TECHNICAL PARAMTERS.....	6

FEATURES

- ◆ Simple structure and convenient installation;
- ◆ Products have more obvious advantages in meeting future diversified demands;
- ◆ User first, experience is king, fool operation is the best result, no training;
- ◆ The unique anti-retrofitting interface can be used to communicate by simply inserting the interface.
- ◆ It can be used with the fifth generation of dual color controller, the sixth generation of full color controller and VMF multi-function card.
- ◆ It supports real-time monitoring of environmental temperature and humidity. The humidity measurement range is from 0 to 99.9%RH increment of 3%RH, and the temperature measurement range is from -40°C to +80°C increment of 0.5°C.
- ◆ Suitable for all kinds of full-color LED display.
- ◆ Can be used in the outdoor, excellent long-term stability, strong anti-interference ability, reliable quality;
- ◆ No external components, no external power supply.

DEMENSION

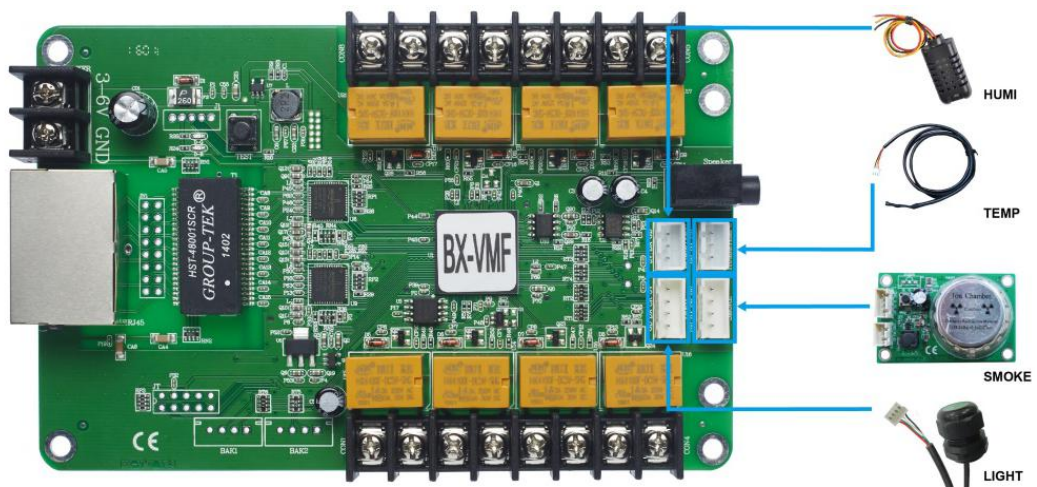


Connection definition



CONNECTION

SENSOR connection with VMF and other controller which support brightness sensor



TECHNICAL PARAMTERS

1. It can detect the temperature of the surrounding environment.
2. The sensitivity can be adjusted, the humidity precision value is 3%RH, the temperature precision value is 0.5°C,
3. Measurement range: humidity from 0 to 99.9%RH, temperature from -40°C to +80°C.
4. Working voltage 3.3v-5v.
5. Plug and play, easy to use.

SHANGHAI ONBON TECHNOLOGY INC.

Address: Floor 7, Tower 88, 1199#, North Qinzhou Road,Xuhui District,shanghai,China

website: www.onbonbx.com

TEL:86-15921814956